

## VAMP2 RABBIT MAB

**Cat.#:** N263603

**Product Name:** Anti-VAMP2 Rabbit Monoclonal Antibody

**Synonyms:** vesicle-associated membrane protein 2 (synaptobrevin 2); SYB2; VAMP-2

**UNIPROT ID:** P63027

**Background:** The SNARE complex is involved in vesicular transport and membrane fusion, a process regulated by calcium. In neurons, VAMP2 is predominantly inserted in presynaptic vesicle membranes. Assembly of VAMP2 with the plasma membrane SNAREs syntaxin 1 and SNAP25 is a key event necessary for membrane fusion and neurotransmitter release.

**Immunogen:** A synthetic peptide of human VAMP2

**Applications:** WB,IP

**Recommended Dilutions:** WB: 1/500-1/1000 IP: 1/20

**Host Species:** Rabbit

**Clonality:** Rabbit Monoclonal

**Clone ID:** R05-7F2

**MW:** Calculated MW: 13 kDa; Observed MW: 13 kDa

**Isotype:** IgG

**Purification:** Affinity Purified

**Species Reactivity:** Human,Mouse,Rat

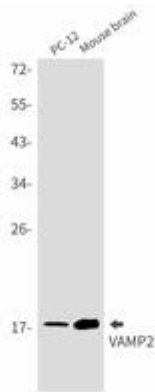
**Conjugation:** Unconjugated

**Modification:** Unmodified

**Constituents:** PBS (without Mg<sup>2+</sup> and Ca<sup>2+</sup>), pH 7.3 containing 50% glycerol, 0.5% BSA and 0.02% sodium azide

**Research Areas:** Signal Transduction

**Storage & Shipping:** Store at -20°C. Avoid repeated freezing and thawing



Western blot analysis of VAMP2 in PC-12, mouse brain lysates using VAMP2 antibody.