

VAMP2 RABBIT PAB

Cat.#: N225800

Product Name: Anti-VAMP2 Rabbit pAb

Synonyms: vesicle-associated membrane protein 2 (synaptobrevin 2); SYB2; VAMP-2

UNIPROT ID: P63027

Background: The SNARE complex is involved in vesicular transport and membrane fusion, a process regulated by calcium. In neurons, VAMP2 is predominantly inserted in presynaptic vesicle membranes. Assembly of VAMP2 with the plasma membrane SNAREs syntaxin 1 and SNAP25 is a key event necessary for membrane fusion and neurotransmitter release.

Immunogen: A synthesized peptide derived from human VAMP2

Applications: WB, ICC/IF, IP, FC

Recommended Dilutions: WB: 1/500-1/1000 IF: 1/50-1/200 IP: 1/20 FC: 1/50-1/100

Host Species: Rabbit

Clonality: Rabbit Polyclonal

Clone ID: -

MW: Calculated MW: 13 kDa; Observed MW: 16 kDa

Isotype: IgG

Purification: Affinity Chromatography

Species Reactivity: Human, Mouse, Rat

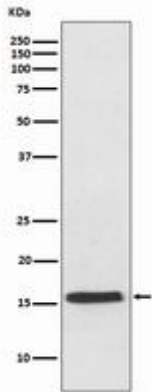
Conjugation: Unconjugated

Modification: Unmodified

Constituents: PBS (without Mg²⁺ and Ca²⁺), pH 7.3 containing 50% glycerol, 0.5% BSA and 0.02% sodium azide

Research Areas: Signal Transduction

Storage & Shipping: Store at -20°C. Avoid repeated freezing and thawing



Western blot analysis of VAMP2 in mouse brain lysates using VAMP2 antibody.