

## VANGL2 RABBIT PAB

**Cat.#:** S220254

**Product Name:** Anti-VANGL2 Rabbit Polyclonal Antibody

**Synonyms:** LPP1; LTAP; STBI; STBM; STBM1

**UNIPROT ID:** Q9ULK5 (Gene Accession - NP\_065068 )

**Background:** The protein encoded by this gene is a membrane protein involved in the regulation of planar cell polarity, especially in the stereociliary bundles of the cochlea. The encoded protein transmits directional signals to individual cells or groups of cells in epithelial sheets. This protein is also involved in the development of the neural plate.

**Immunogen:** Synthetic peptide of human VANGL2

**Applications:** ELISA, WB, IHC

**Recommended Dilutions:** IHC: 15-50;WB: 200-1000;ELISA: 1000-2000

**Host Species:** Rabbit

**Clonality:** Rabbit Polyclonal

**Isotype:** Immunogen-specific rabbit IgG

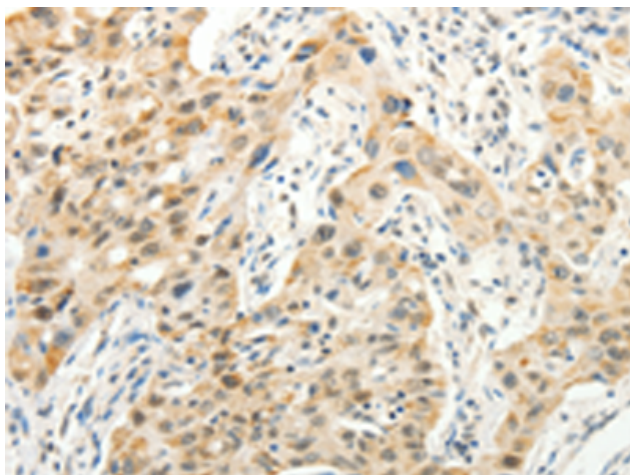
**Purification:** Antigen affinity purification

**Species Reactivity:** Human, Mouse, Rat

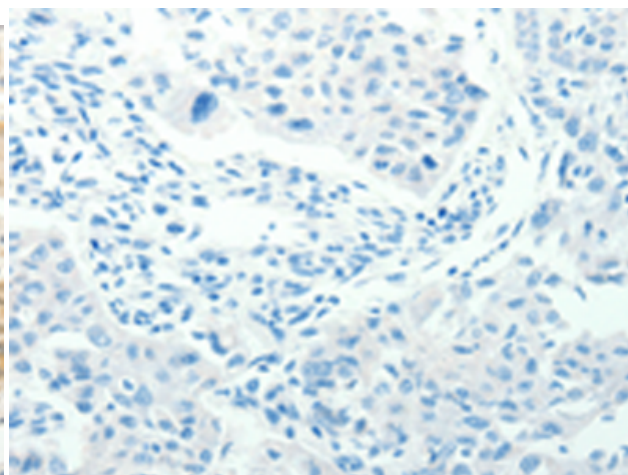
**Constituents:** PBS (without Mg<sup>2+</sup> and Ca<sup>2+</sup>), pH 7.4, 150 mM NaCl, 0.05% Sodium Azide and 40% glycerol

**Research Areas:** Neuroscience, Cardiovascular, Signal Transduction

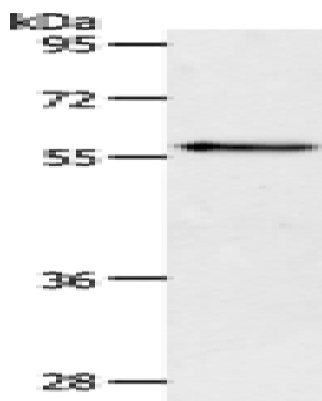
**Storage & Shipping:** Store at -20°C. Avoid repeated freezing and thawing



Immunohistochemistry analysis of paraffin embedded Human lung cancer tissue using 220254(VANGL2 Antibody) at a dilution of 1/15(Cytoplasm ).



In comparison with the IHC on the left, the same paraffin-embedded Human lung cancer tissue is first treated with the synthetic peptide and then with 220254(Anti-VANGL2 Antibody) at dilution 1/15.



Gel: 10%SDS-PAGE, Lysate: 40 µg;  
Lane: NIH/3T3 cells;  
Primary antibody: 220254(VANGL2 Antibody) at dilution 1/250;  
Secondary antibody: Goat anti rabbit IgG at 1/8000 dilution;  
Exposure time: 2 seconds