

## VAX1 RABBIT PAB

**Cat.#:** S221561

**Product Name:** Anti-VAX1 Rabbit Polyclonal Antibody

**Synonyms:** MCOPSI1

**UNIPROT ID:** Q5SQQ9 (Gene Accession - NP\_001106175 )

**Background:** This gene encodes a homeo-domain containing protein from a class of homeobox transcription factors which are conserved in vertebrates. Genes of this family are involved in the regulation of body development and morphogenesis. The most conserved genes, called HOX genes are found in special gene clusters. This gene belongs to the VAX subfamily and lies in the vicinity of the EMX homeobox gene family. Another member of VAX family is located on chromosome 2. The encoded protein may play an important role in the development of anterior ventral forebrain and visual system. Multiple transcript variants encoding different isoforms have been found for this gene.

**Immunogen:** Synthetic peptide of human VAX1

**Applications:** ELISA, IHC

**Recommended Dilutions:** IHC: 50-200; ELISA: 5000-10000

**Host Species:** Rabbit

**Clonality:** Rabbit Polyclonal

**Isotype:** Immunogen-specific rabbit IgG

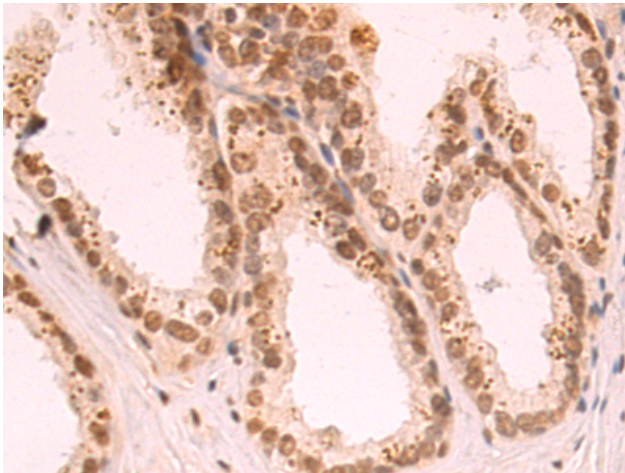
**Purification:** Antigen affinity purification

**Species Reactivity:** Human, Mouse, Rat

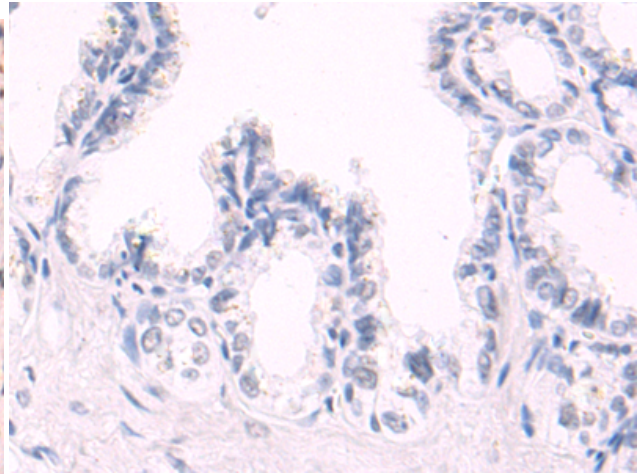
**Constituents:** PBS (without Mg<sup>2+</sup> and Ca<sup>2+</sup>), pH 7.4, 150 mM NaCl, 0.05% Sodium Azide and 40% glycerol

**Research Areas:** Neuroscience

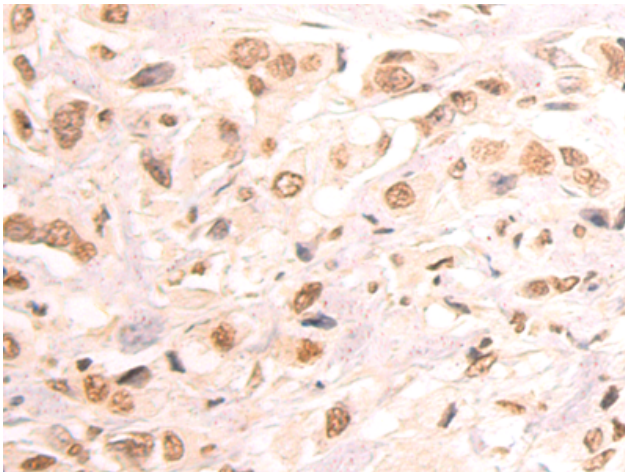
**Storage & Shipping:** Store at -20°C. Avoid repeated freezing and thawing



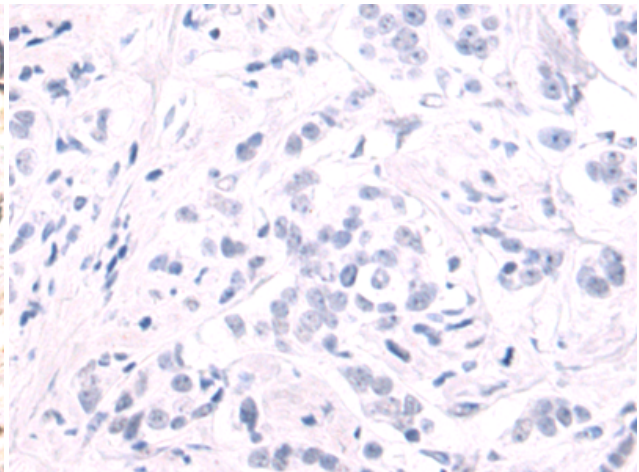
Immunohistochemistry analysis of paraffin embedded Human prostate cancer tissue using 221561(VAX1 Antibody) at a dilution of 1/50(Nucleus).



In comparison with the IHC on the left, the same paraffin-embedded Human prostate cancer tissue is first treated with the synthetic peptide and then with 221561(Anti-VAX1 Antibody) at dilution 1/50.



The image on the left is immunohistochemistry of paraffin-embedded Human breast cancer tissue using 221561(Anti-VAX1 Antibody) at a dilution of 1/50.



In comparison with the IHC on the left, the same paraffin-embedded Human breast cancer tissue is first treated with synthetic peptide and then with D263205(Anti-VAX1 Antibody) at dilution 1/50.