

VCP RABBIT MAB

Cat.#: N263062

Product Name: Anti-VCP Rabbit Monoclonal Antibody

Synonyms: 15S Mg(2+) ATPase p97 subunit; ALS14; ATPase p97; CDC48; IBMPFD; p97; TER ATPase; TERA; VCP; Yeast Cdc48p homolog

UNIPROT ID: P55072

Background: Necessary for the fragmentation of Golgi stacks during mitosis and for their reassembly after mitosis. Involved in the formation of the transitional endoplasmic reticulum (tER). The transfer of membranes from the endoplasmic reticulum to the Golgi apparatus occurs via 50-70 nm transition vesicles which derive from part-rough, part-smooth transitional elements of the endoplasmic reticulum (tER).

Immunogen: A synthetic peptide of human VCP

Applications: WB,IHC-F,IHC-P,ICC/IF,IP

Recommended Dilutions: WB: 1/500-1/1000 IHC: 1/50-1/100 IF: 1/50-1/200 IP: 1/20

Host Species: Rabbit

Clonality: Rabbit Monoclonal

Clone ID: R06-9D7

MW: Calculated MW: 89 kDa; Observed MW: 89 kDa

Isotype: IgG

Purification: Affinity Purified

Species Reactivity: Human,Mouse,Rat

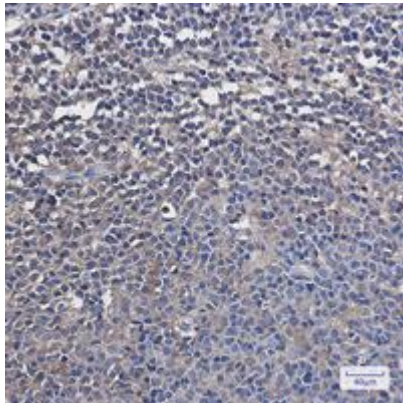
Conjugation: Unconjugated

Modification: Unmodified

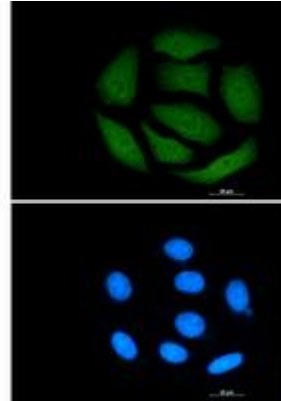
Constituents: PBS (without Mg²⁺ and Ca²⁺), pH 7.3 containing 50% glycerol, 0.5% BSA and 0.02% sodium azide

Research Areas: Neuroscience

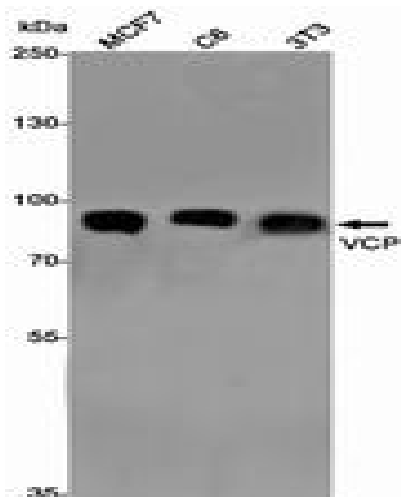
Storage & Shipping: Store at -20°C. Avoid repeated freezing and thawing



Immunohistochemistry analysis of paraffin-embedded Human tonsil using VCP antibody. High-pressure and temperature Sodium Citrate pH 6.0 was used for antigen retrieval.



Immunocytochemistry analysis of VCP (green) in A549 using VCP antibody, and DAPI (blue).



Western blot analysis of VCP in MCF-7, C6, 3T3 lysates using VCP antibody.