

## VDAC1 RABBIT PAB

**Cat.#:** S213281

**Product Name:** Anti-VDAC1 Rabbit Polyclonal Antibody

**Synonyms:** PORIN; VDAC-1

**UNIPROT ID:** P21796 (Gene Accession - NP\_003365 )

**Background:** This gene encodes a voltage-dependent anion channel protein that is a major component of the outer mitochondrial membrane. The encoded protein facilitates the exchange of metabolites and ions across the outer mitochondrial membrane and may regulate mitochondrial functions. This protein also forms channels in the plasma membrane and may be involved in transmembrane electron transport. Alternate splicing results in multiple transcript variants. Multiple pseudogenes of this gene are found on chromosomes 1, 2 3, 6, 9, 12, X and Y.

**Immunogen:** Synthetic peptide of human VDAC1

**Applications:** ELISA, WB, IHC

**Recommended Dilutions:** IHC: 25-100;WB: 1000-5000;ELISA: 2000-60000

**Host Species:** Rabbit

**Clonality:** Rabbit Polyclonal

**Isotype:** Immunogen-specific rabbit IgG

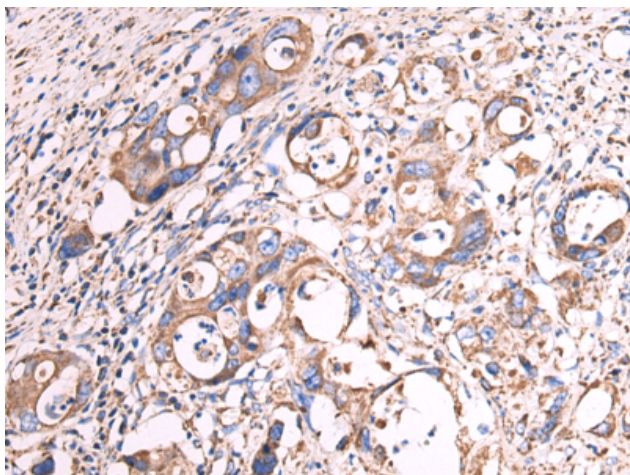
**Purification:** Antigen affinity purification

**Species Reactivity:** Human, Mouse, Rat

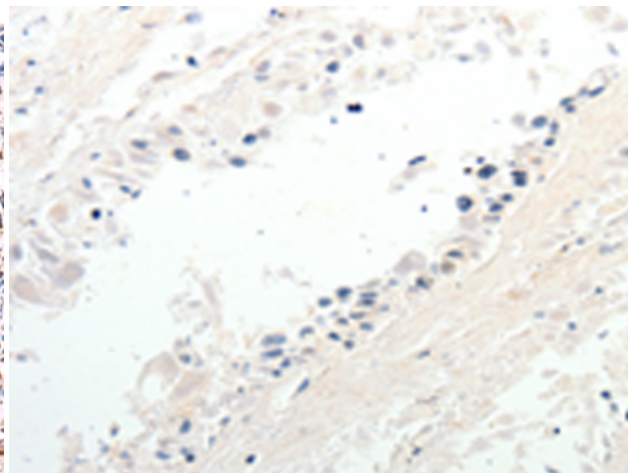
**Constituents:** PBS (without Mg<sup>2+</sup> and Ca<sup>2+</sup>), pH 7.4, 150 mM NaCl, 0.05% Sodium Azide and 40% glycerol

**Research Areas:** Metabolism

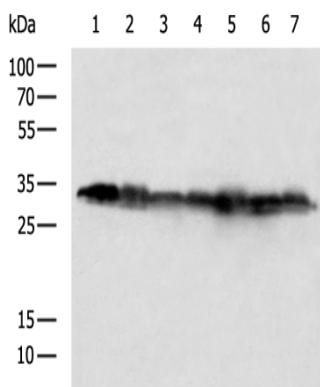
**Storage & Shipping:** Store at -20°C. Avoid repeated freezing and thawing



Immunohistochemistry analysis of paraffin embedded Human esophagus cancer tissue using 213281(VDAC1 Antibody) at a dilution of 1/13(Cytoplasm).



In comparison with the IHC on the left, the same paraffin-embedded Human esophagus cancer tissue is first treated with the synthetic peptide and then with 213281(Anti-VDAC1 Antibody) at dilution 1/13.



Gel: 12%SDS-PAGE, Lysate: 40  $\mu$ g;  
Lane 1-7: HeLa, 293T cell, Mouse brain tissue,  
231, LNCAP, Jurkat, K562 cell lysates;  
Primary antibody: 213281(VDAC1 Antibody) at  
dilution 1/1000;  
Secondary antibody: HRP-conjugated Goat  
anti rabbit IgG at 1/5000 dilution;  
Exposure time: 1 second