

## VEGFC RABBIT PAB

**Cat.#:** S213285

**Product Name:** Anti-VEGFC Rabbit Polyclonal Antibody

**Synonyms:** VRP; Flt4-L; LMPHID; LMPHM4

**UNIPROT ID:** P49767 (Gene Accession - NP\_005420 )

**Background:** The protein encoded by this gene is a member of the platelet-derived growth factor/vascular endothelial growth factor (PDGF/VEGF) family. The encoded protein promotes angiogenesis and endothelial cell growth, and can also affect the permeability of blood vessels. The proprotein is further cleaved into a fully processed form that can bind and activate VEGFR-2 and VEGFR-3 receptors.

**Immunogen:** Synthetic peptide of human VEGFC

**Applications:** ELISA, WB, IHC

**Recommended Dilutions:** IHC: Oct-50;WB: 500-2000;ELISA: 1000-10000

**Host Species:** Rabbit

**Clonality:** Rabbit Polyclonal

**Isotype:** Immunogen-specific rabbit IgG

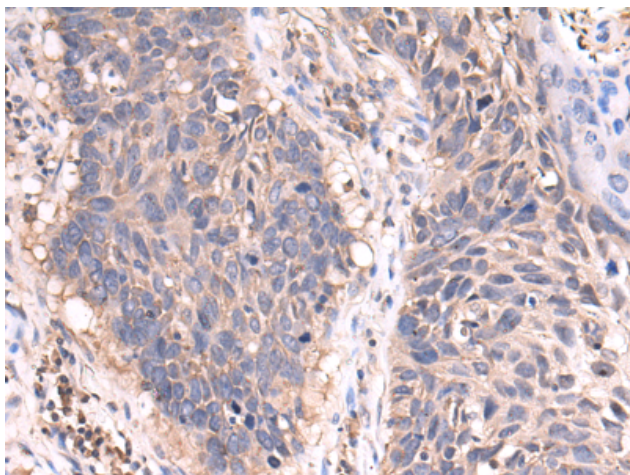
**Purification:** Antigen affinity purification

**Species Reactivity:** Human

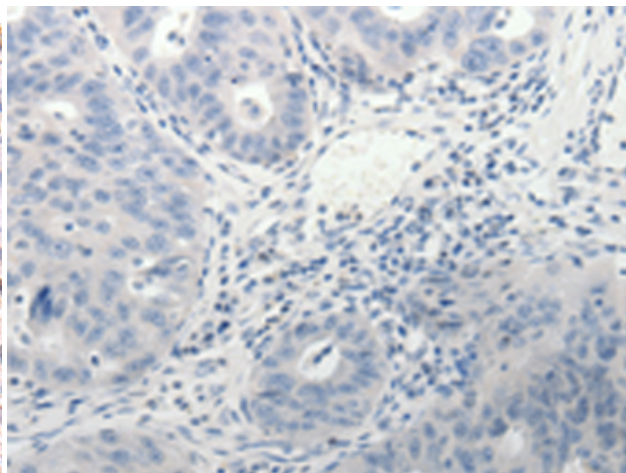
**Constituents:** PBS (without Mg<sup>2+</sup> and Ca<sup>2+</sup>), pH 7.4, 150 mM NaCl, 0.05% Sodium Azide and 40% glycerol

**Research Areas:** Signal Transduction, Cardiovascular, Cancer, Neuroscience

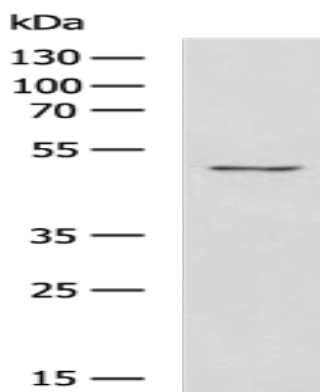
**Storage & Shipping:** Store at -20°C. Avoid repeated freezing and thawing



Immunohistochemistry analysis of paraffin embedded Human ovarian cancer tissue using 213285(VEGFC Antibody) at a dilution of 1/5(Cytoplasm).



In comparison with the IHC on the left, the same paraffin-embedded Human ovarian cancer tissue is first treated with the synthetic peptide and then with 213285(Anti-VEGFC Antibody) at dilution 1/5.



Gel: 8%SDS-PAGE, Lysate: 40  $\mu$ g;  
Lane: 231 cell lysate;  
Primary antibody: 213285(VEGFC Antibody) at dilution 1/400;  
Secondary antibody: HRP-conjugated Goat anti rabbit IgG at 1/5000 dilution;  
Exposure time: 20 seconds