

VENTX RABBIT PAB

Cat.#: S212032

Product Name: Anti-VENTX Rabbit Polyclonal Antibody

Synonyms: NA88A; HPX42B; VENTX2

UNIPROT ID: O95231 (Gene Accession - BC108916)

Background: This gene encodes a member of the Vent family of homeodomain proteins. The encoded protein may function as a transcriptional repressor and be involved in mesodermal patterning and hemopoietic stem cell maintenance. Multiple pseudogenes exist for this gene. A transcribed pseudogene located on chromosome X may lead to antigen production in certain melanomas. [provided by RefSeq, Jul 2008]

Immunogen: Fusion protein of human VENTX

Applications: ELISA, IHC

Recommended Dilutions: IHC: 100-200; ELISA: 5000-10000

Host Species: Rabbit

Clonality: Rabbit Polyclonal

Isotype: Immunogen-specific rabbit IgG

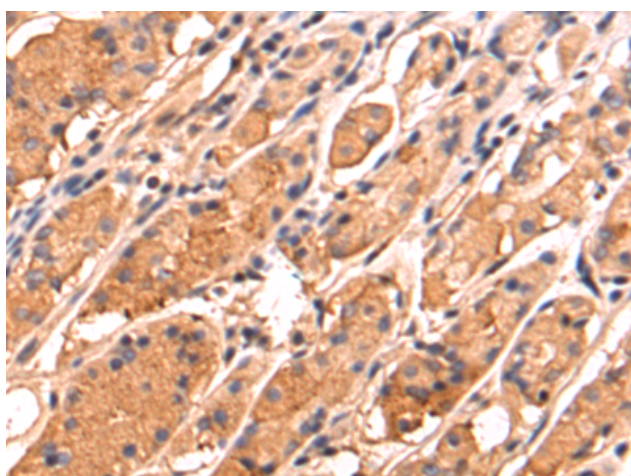
Purification: Antigen affinity purification

Species Reactivity: Human

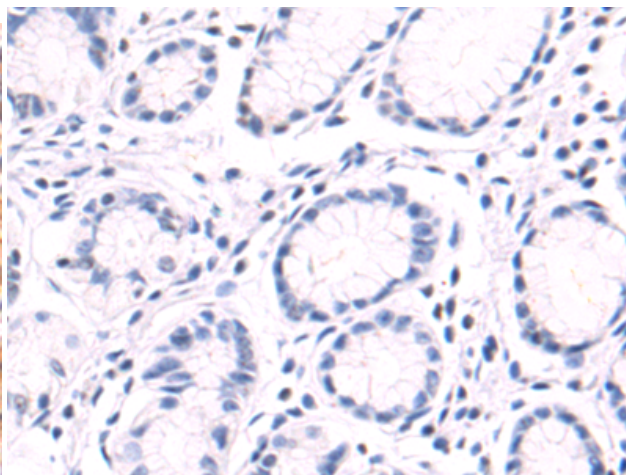
Constituents: PBS (without Mg²⁺ and Ca²⁺), pH 7.4, 150 mM NaCl, 0.05% Sodium Azide and 40% glycerol

Research Areas: Epigenetics and Nuclear Signaling

Storage & Shipping: Store at -20°C. Avoid repeated freezing and thawing



Immunohistochemistry analysis of paraffin embedded Human esophagus cancer tissue using 212032(VENTX Antibody) at a dilution of 1/90(Cytoplasm).



In comparison with the IHC on the left, the same paraffin-embedded Human esophagus cancer tissue is first treated with the fusion protein and then with 212032(Anti-VENTX Antibody) at dilution 1/90.