

VGLL3 RABBIT PAB

Cat.#: S221529

Product Name: Anti-VGLL3 Rabbit Polyclonal Antibody

Synonyms: VGL3; VGL-3

UNIPROT ID: A8MV65 (Gene Accession - NP_057290)

Background: May act as a specific coactivator for the mammalian TEFs.

Immunogen: Synthetic peptide of human VGLL3

Applications: ELISA, IHC

Recommended Dilutions: IHC: 25-50; ELISA: 5000-10000

Host Species: Rabbit

Clonality: Rabbit Polyclonal

Isotype: Immunogen-specific rabbit IgG

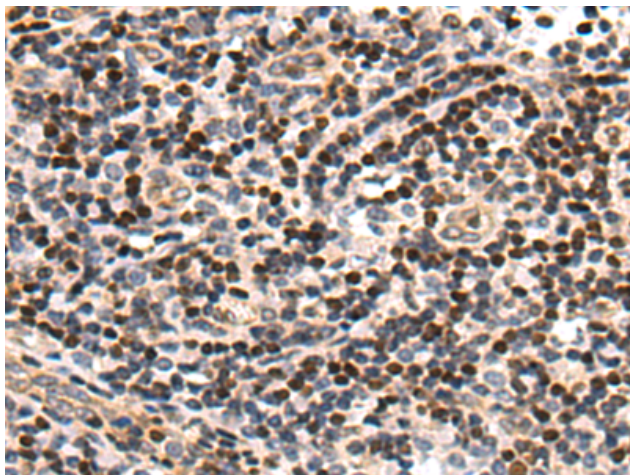
Purification: Antigen affinity purification

Species Reactivity: Human, Mouse

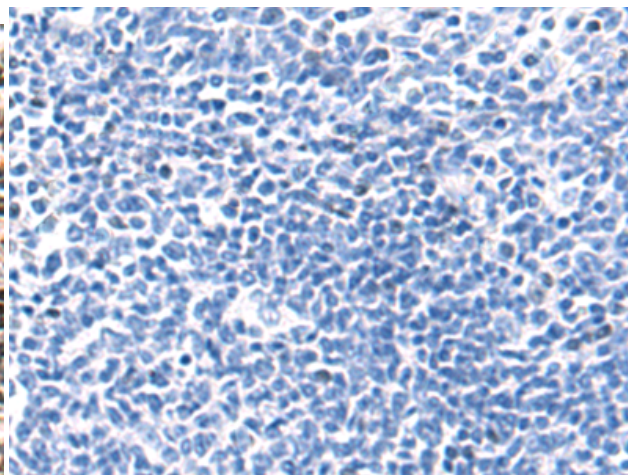
Constituents: PBS (without Mg²⁺ and Ca²⁺), pH 7.4, 150 mM NaCl, 0.05% Sodium Azide and 40% glycerol

Research Areas: Epigenetics and Nuclear Signaling

Storage & Shipping: Store at -20°C. Avoid repeated freezing and thawing



Immunohistochemistry analysis of paraffin embedded Human tonsil tissue using 221529(VGLL3 Antibody) at a dilution of 1/25(Nucleus).



In comparison with the IHC on the left, the same paraffin-embedded Human tonsil tissue is first treated with the synthetic peptide and then with 221529(Anti-VGLL3 Antibody) at dilution 1/25.