

## VHL RABBIT PAB

**Cat.#:** S216875

**Product Name:** Anti-VHL Rabbit Polyclonal Antibody

**Synonyms:** RCA1; VHL1; pVHL; HRCA1

**UNIPROT ID:** P40337 (Gene Accession - BC058831 )

**Background:** This gene encodes a component of a ubiquitination complex. The encoded protein is involved in the ubiquitination and degradation of hypoxia-inducible-factor (HIF), which is a transcription factor that plays a central role in the regulation of gene expression by oxygen. In addition to oxygen-related gene expression, this protein plays a role in many other cellular processes including cilia formation, cytokine signaling, regulation of senescence, and formation of the extracellular matrix. Variants of this gene are associated with von Hippel-Lindau syndrome, pheochromocytoma, erythrocytosis, renal cell carcinoma, and cerebellar hemangioblastoma.

**Immunogen:** Fusion protein of human VHL

**Applications:** ELISA, WB, IHC

**Recommended Dilutions:** IHC: 50-200;WB: 500-2000;ELISA: 2000-5000

**Host Species:** Rabbit

**Clonality:** Rabbit Polyclonal

**Isotype:** Immunogen-specific rabbit IgG

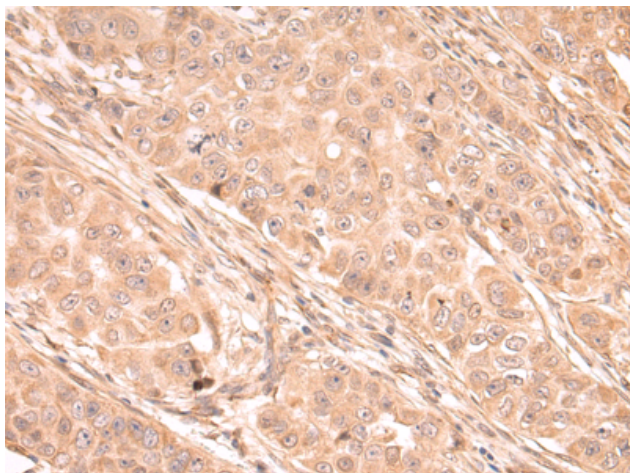
**Purification:** Antigen affinity purification

**Species Reactivity:** Human

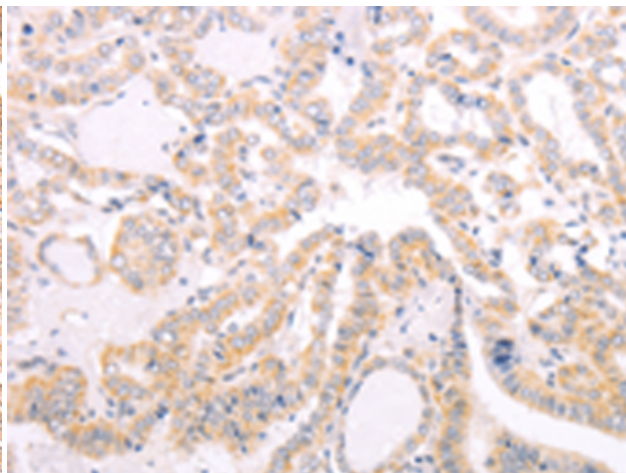
**Constituents:** PBS (without Mg<sup>2+</sup> and Ca<sup>2+</sup>), pH 7.4, 150 mM NaCl, 0.05% Sodium Azide and 40% glycerol

**Research Areas:** Epigenetics and Nuclear Signaling, Cancer, Cardiovascular, Metabolism, Cell Biology

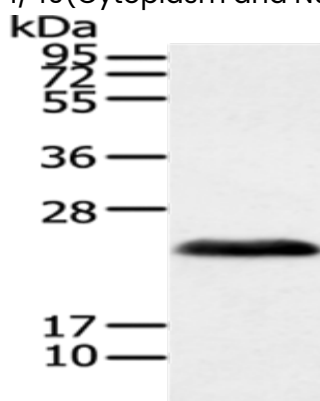
**Storage & Shipping:** Store at -20°C. Avoid repeated freezing and thawing



Immunohistochemistry analysis of paraffin-embedded Human breast cancer tissue using 216875(VHL Antibody) at a dilution of 1/40(Cytoplasm and Nucleus).



Immunohistochemistry analysis of paraffin-embedded Human colorectal cancer tissue using 216875(Anti-VHL Antibody) at a dilution of 1/40.



Gel: 12%SDS-PAGE, Lysate: 40  $\mu$ g;  
Lane: Human fetal brain tissue lysate;  
Primary antibody: 216875(VHL Antibody) at dilution 1/200;  
Secondary antibody: Goat anti rabbit IgG at 1/8000 dilution;  
Exposure time: 1 second