

VIL1 RABBIT PAB

Cat.#: S218003

Product Name: Anti-VIL1 Rabbit Polyclonal Antibody

Synonyms: VIL; D2S1471

UNIPROT ID: P09327 (Gene Accession - BC017303)

Background: This gene encodes a member of a family of calcium-regulated actin-binding proteins. This protein represents a dominant part of the brush border cytoskeleton which functions in the capping, severing, and bundling of actin filaments. Two mRNAs of 2.7 kb and 3.5 kb have been observed; they result from utilization of alternate poly-adenylation signals present in the terminal exon.

Immunogen: Fusion protein of human VIL1

Applications: ELISA, WB, IHC

Recommended Dilutions: IHC: 50-200;WB: 1000-5000;ELISA: 5000-10000

Host Species: Rabbit

Clonality: Rabbit Polyclonal

Isotype: Immunogen-specific rabbit IgG

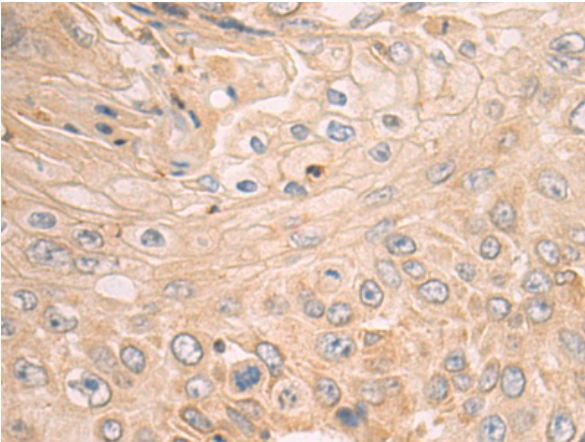
Purification: Antigen affinity purification

Species Reactivity: Human

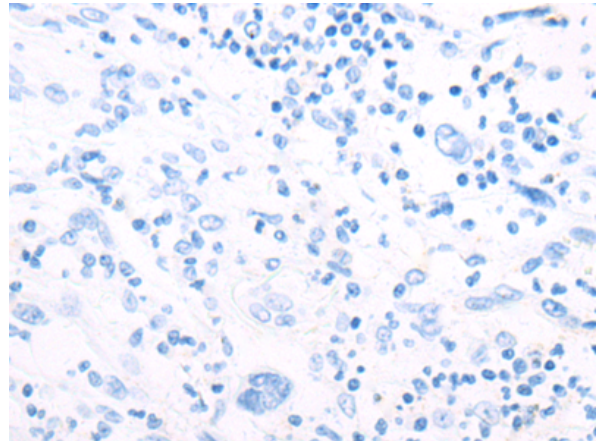
Constituents: PBS (without Mg²⁺ and Ca²⁺), pH 7.4, 150 mM NaCl, 0.05% Sodium Azide and 40% glycerol

Research Areas: Signal Transduction

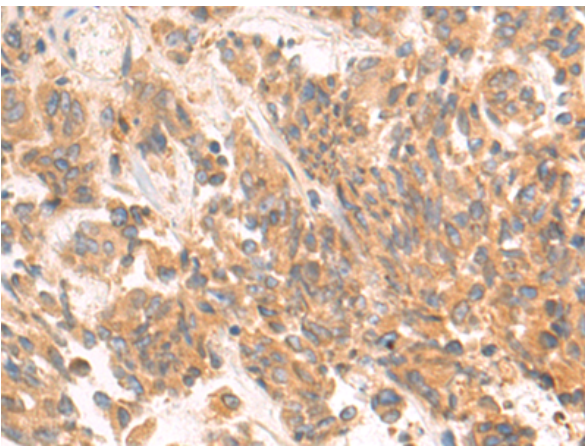
Storage & Shipping: Store at -20°C. Avoid repeated freezing and thawing



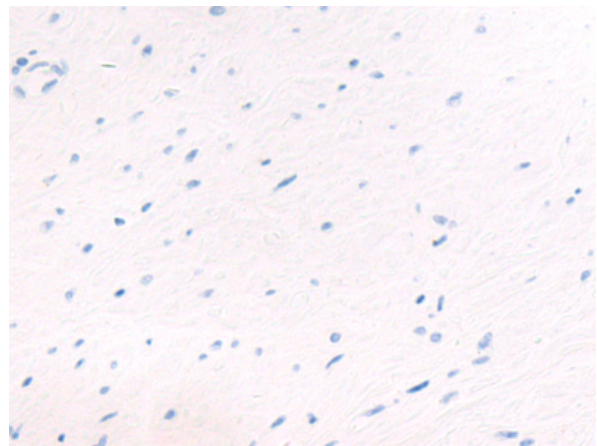
Immunohistochemistry analysis of paraffin embedded Human esophagus cancer tissue using 218003(VIL1 Antibody) at a dilution of 1/80(Cytoplasm and Cell membrane).



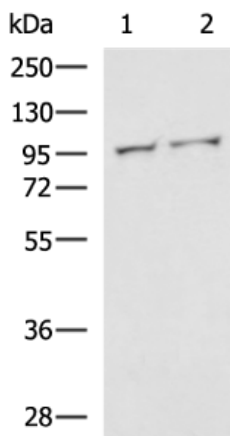
In comparison with the IHC on the left, the same paraffin-embedded Human esophagus cancer tissue is first treated with the fusion protein and then with 218003(Anti-VIL1 Antibody) at dilution 1/80.



The image on the left is immunohistochemistry of paraffin-embedded Human prostate cancer tissue using 218003(Anti-VIL1 Antibody) at a dilution of 1/80.



In comparison with the IHC on the left, the same paraffin-embedded Human prostate cancer tissue is first treated with fusion protein and then with D223534(Anti-VIL1 Antibody) at dilution 1/80.



Gel: 8%SDS-PAGE, Lysate: 40 µg;
 Lane 1-2: 231, HT-29 cell lysates;
 Primary antibody: 218003(VIL1 Antibody) at dilution 1/1000;
 Secondary antibody: HRP-conjugated Goat anti rabbit IgG at 1/5000 dilution;
 Exposure time: 10 seconds



Product Description

Pioneering GTPase and Oncogene Product Development since 2010
