

## VITRONECTIN RABBIT MAB

**Cat.#:** N263075

**Product Name:** Anti-Vitronectin Rabbit Monoclonal Antibody

**Synonyms:** VTN; Vitronectin; VN; S-protein; Serum-spreading factor; V75

**UNIPROT ID:** P04004

**Background:** The protein encoded by this gene is a member of the pexin family. It is found in serum and tissues and promotes cell adhesion and spreading, inhibits the membrane-damaging effect of the terminal cytolytic complement pathway, and binds to several serpin serine protease inhibitors. It is a secreted protein and exists in either a single chain form or a clipped, two chain form held together by a disulfide bond.

**Immunogen:** A synthetic peptide of human Vitronectin

**Applications:** WB,IHC-F,IHC-P,ICC/IF

**Recommended Dilutions:** WB: 1/500-1/1000 IHC: 1/50-1/100 IF: 1/50-1/200

**Host Species:** Rabbit

**Clonality:** Rabbit Monoclonal

**Clone ID:** R06-2E1

**MW:** Calculated MW: 54 kDa; Observed MW: 70 kDa

**Isotype:** IgG

**Purification:** Affinity Purified

**Species Reactivity:** Human

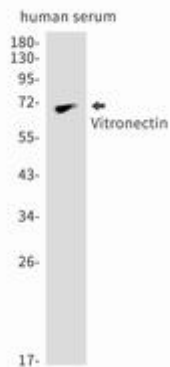
**Conjugation:** Unconjugated

**Modification:** Unmodified

**Constituents:** PBS (without Mg<sup>2+</sup> and Ca<sup>2+</sup>), pH 7.3 containing 50% glycerol, 0.5% BSA and 0.02% sodium azide

**Research Areas:** Cardiovascular

**Storage & Shipping:** Store at -20°C. Avoid repeated freezing and thawing



Western blot analysis of Vitronectin in Human serum lysates using Vitronectin antibody.