

## VMA21 RABBIT PAB

**Cat.#:** S213291

**Product Name:** Anti-VMA21 Rabbit Polyclonal Antibody

**Synonyms:** MEAX; XMEA

**UNIPROT ID:** Q3ZAQ7 (Gene Accession - NP\_001017980 )

**Background:** This gene encodes a chaperone for assembly of lysosomal vacuolar ATPase.

**Immunogen:** Synthetic peptide of human VMA21

**Applications:** ELISA, IHC, IF

**Recommended Dilutions:** IHC: 150-500; ELISA: 5000-240000

**Host Species:** Rabbit

**Clonality:** Rabbit Polyclonal

**Isotype:** Immunogen-specific rabbit IgG

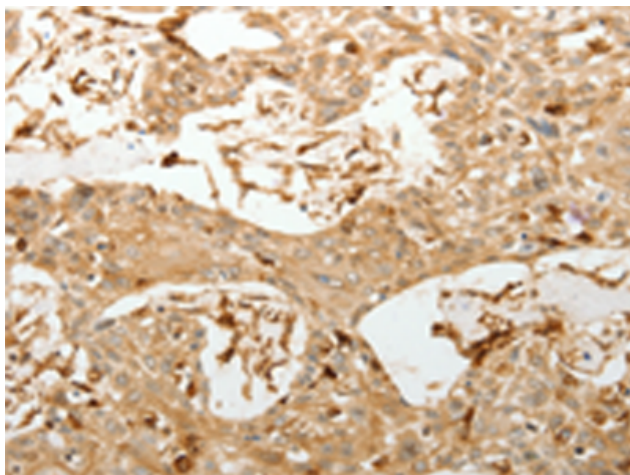
**Purification:** Antigen affinity purification

**Species Reactivity:** Human, Mouse

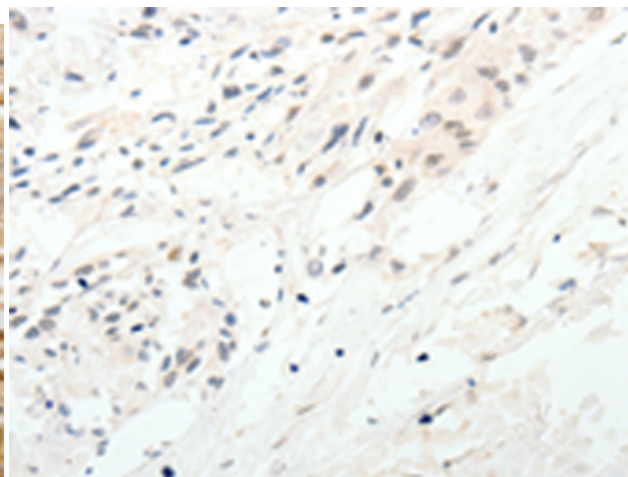
**Constituents:** PBS (without Mg<sup>2+</sup> and Ca<sup>2+</sup>), pH 7.4, 150 mM NaCl, 0.05% Sodium Azide and 40% glycerol

**Research Areas:** Signal Transduction, Cell Biology

**Storage & Shipping:** Store at -20°C. Avoid repeated freezing and thawing



Immunohistochemistry analysis of paraffin embedded Human esophagus cancer tissue using 213291(VMA21 Antibody) at a dilution of 1/150(Cytoplasm).



In comparison with the IHC on the left, the same paraffin-embedded Human esophagus cancer tissue is first treated with the synthetic peptide and then with 213291(Anti-VMA21 Antibody) at dilution 1/150.