

## VPS25 RABBIT PAB

**Cat.#:** S211752

**Product Name:** Anti-VPS25 Rabbit Polyclonal Antibody

**Synonyms:** DERP9; EAP20; FAP20

**UNIPROT ID:** Q9BRG1 (Gene Accession - BC006282 )

**Background:** This gene encodes a protein that is a subunit of the endosomal sorting complex required for transport II (ESCRT-II). This protein complex functions in sorting of ubiquitinated membrane proteins during endocytosis. A pseudogene of this gene is present on chromosome 1.

**Immunogen:** Fusion protein of human VPS25

**Applications:** ELISA, WB, IHC

**Recommended Dilutions:** IHC: 50-200;WB: 1000-5000;ELISA: 5000-10000

**Host Species:** Rabbit

**Clonality:** Rabbit Polyclonal

**Isotype:** Immunogen-specific rabbit IgG

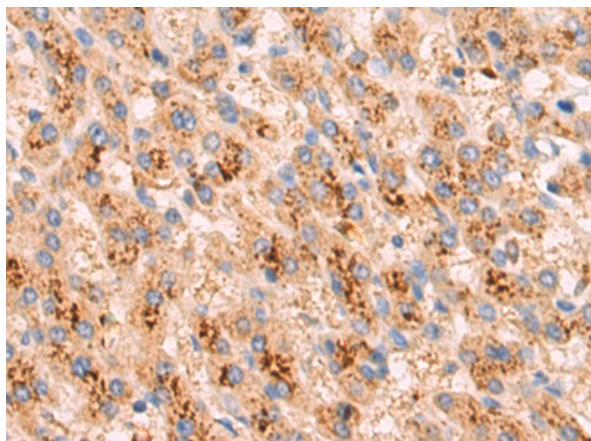
**Purification:** Antigen affinity purification

**Species Reactivity:** Human, Mouse, Rat

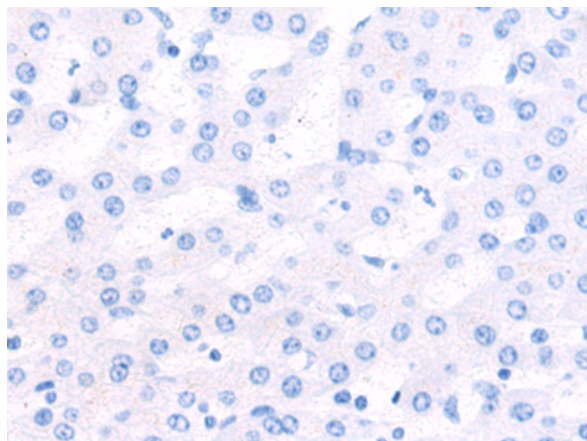
**Constituents:** PBS (without Mg<sup>2+</sup> and Ca<sup>2+</sup>), pH 7.4, 150 mM NaCl, 0.05% Sodium Azide and 40% glycerol

**Research Areas:** Signal Transduction

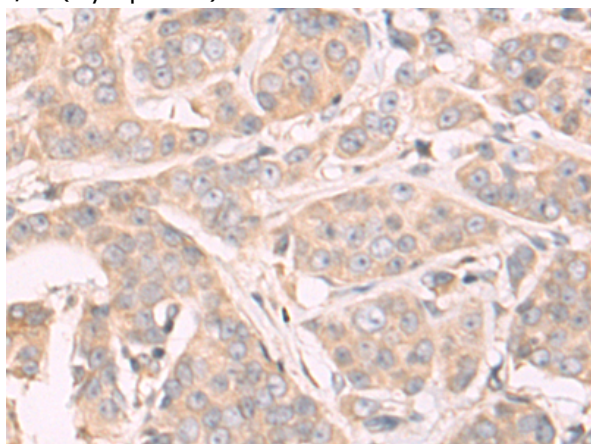
**Storage & Shipping:** Store at -20°C. Avoid repeated freezing and thawing



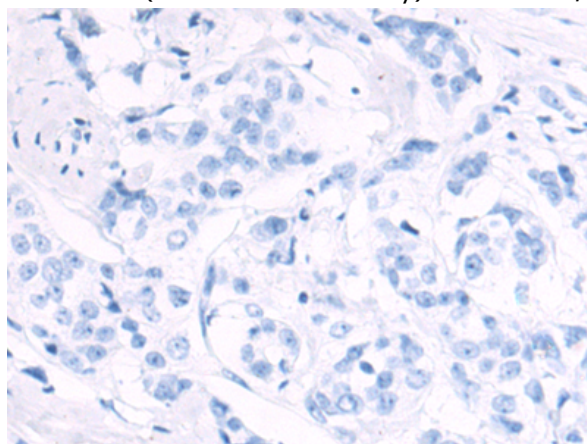
Immunohistochemistry analysis of paraffin embedded Human breast cancer tissue using 211752(VPS25 Antibody) at a dilution of 1/80(Cytoplasm).



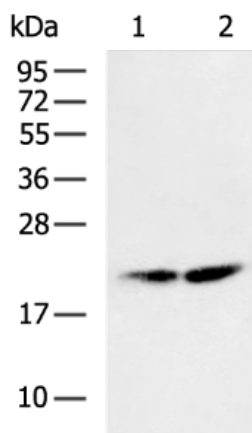
In comparison with the IHC on the left, the same paraffin-embedded Human breast cancer tissue is first treated with the fusion protein and then with 211752(Anti-VPS25 Antibody) at dilution 1/80.



The image on the left is immunohistochemistry of paraffin-embedded Human liver cancer tissue using 211752(Anti-VPS25 Antibody) at a dilution of 1/80.



In comparison with the IHC on the left, the same paraffin-embedded Human liver cancer tissue is first treated with fusion protein and then with D123545(Anti-VPS25 Antibody) at dilution 1/80.



Gel: 12%SDS-PAGE, Lysate: 40 µg;  
 Lane 1-2: Mouse fetal brain tissue, HepG2 cell lysates;  
 Primary antibody: 211752(VPS25 Antibody) at dilution 1/1200;  
 Secondary antibody: HRP-conjugated Goat anti rabbit IgG at 1/5000 dilution;  
 Exposure time: 40 seconds



# Product Description

Pioneering GTPase and Oncogene Product Development since 2010

---