

VPS26A RABBIT PAB

Cat.#: S221108

Product Name: Anti-VPS26A Rabbit Polyclonal Antibody

Synonyms: HB58; PEP8A; VPS26; Hbeta58

UNIPROT ID: O75436 (Gene Accession - NP_004887)

Background: This gene belongs to a group of vacuolar protein sorting (VPS) genes. The encoded protein is a component of a large multimeric complex termed the retromer complex involved in retrograde transport of proteins from endosomes to the trans-Golgi network. The close structural similarity between the yeast and human proteins that make up this complex suggests a similarity in function. Expression studies in yeast and mammalian cells indicate that this protein interacts directly with VPS35, which serves as the core of the retromer complex. Alternative splicing results in multiple transcript variants encoding different isoforms.

Immunogen: Synthetic peptide of human VPS26A

Applications: ELISA, WB, IHC

Recommended Dilutions: IHC: 25-100;WB: 500-2000;ELISA: 2000-5000

Host Species: Rabbit

Clonality: Rabbit Polyclonal

Isotype: Immunogen-specific rabbit IgG

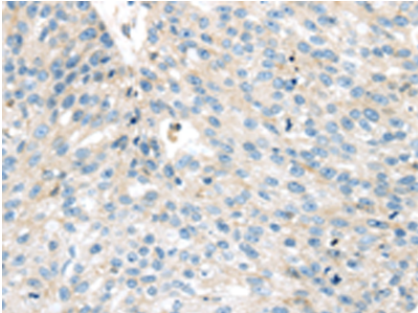
Purification: Antigen affinity purification

Species Reactivity: Human, Mouse, Rat

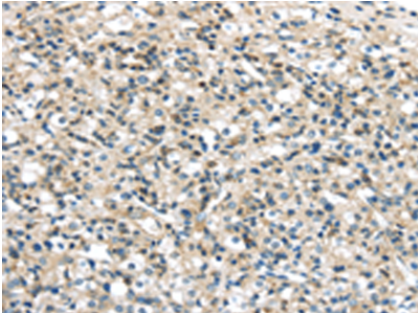
Constituents: PBS (without Mg²⁺ and Ca²⁺), pH 7.4, 150 mM NaCl, 0.05% Sodium Azide and 40% glycerol

Research Areas: Signal Transduction

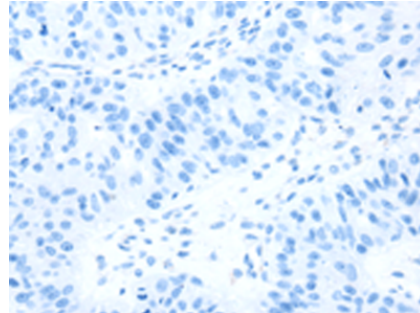
Storage & Shipping: Store at -20°C. Avoid repeated freezing and thawing



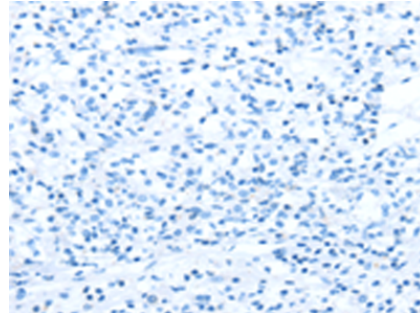
Immunohistochemistry analysis of paraffin embedded Human breast cancer tissue using 221108(VPS26A Antibody) at a dilution of 1/35(Cytoplasm).



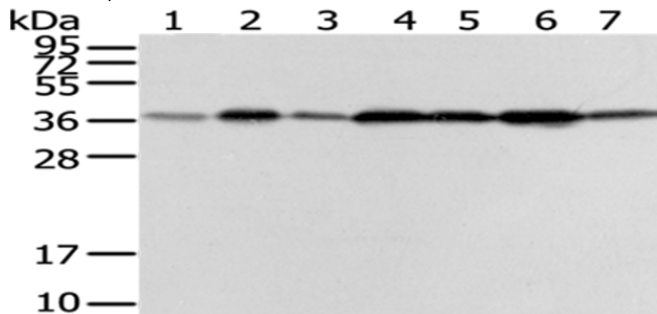
The image on the left is immunohistochemistry of paraffin-embedded Human prostate cancer tissue using 221108(Anti-VPS26A Antibody) at a dilution of 1/35.



In comparison with the IHC on the left, the same paraffin-embedded Human breast cancer tissue is first treated with the synthetic peptide and then with 221108(Anti-VPS26A Antibody) at dilution 1/35.



In comparison with the IHC on the left, the same paraffin-embedded Human prostate cancer tissue is first treated with synthetic peptide and then with D262484(Anti-VPS26A Antibody) at dilution 1/35.



Gel: 12%SDS-PAGE, Lysate: 40 µg;
Lane 1-7: Human placenta tissue, PC3 cells, Human fetal liver tissue, HepG2 cells, Hela cells, A431 cells, 293T cells;
Primary antibody: 221108(VPS26A Antibody) at dilution 1/200;
Secondary antibody: Goat anti rabbit IgG at 1/8000 dilution;
Exposure time: 40 seconds