

VPS35 RABBIT MAB

Cat.#: N263606

Product Name: Anti-VPS35 Rabbit Monoclonal Antibody

Synonyms: hVPS35; MEM3; PARK17; VPS35

UNIPROT ID: Q96QK1

Background: Essential component of the retromer complex, a complex required to retrieve lysosomal enzyme receptors (IGF2R and M6PR) from endosomes to the trans-Golgi network. Also required to regulate transcytosis of the polymeric immunoglobulin receptor (pIgR-pIgA).

Immunogen: A synthetic peptide of human VPS35

Applications: WB,IHC-P

Recommended Dilutions: WB: 1/500-1/1000 IHC: 1/50-1/100

Host Species: Rabbit

Clonality: Rabbit Monoclonal

Clone ID: R03-6E1

MW: Calculated MW: 92 kDa; Observed MW: 81 kDa

Isotype: IgG

Purification: Affinity Purified

Species Reactivity: Human,Mouse,Rat

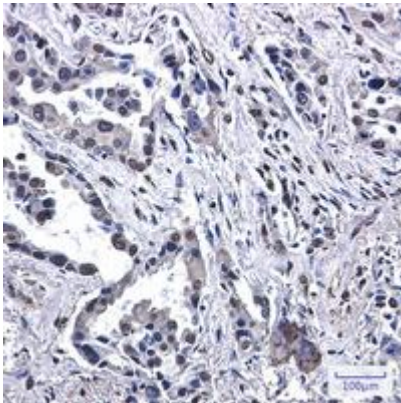
Conjugation: Unconjugated

Modification: Unmodified

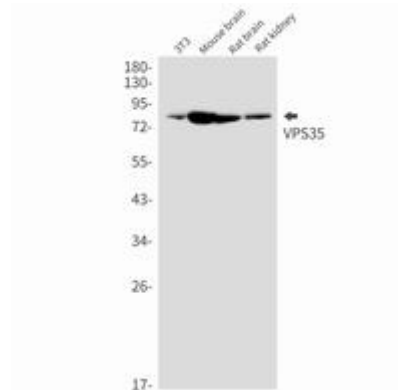
Constituents: PBS (without Mg²⁺ and Ca²⁺), pH 7.3 containing 50% glycerol, 0.5% BSA and 0.02% sodium azide

Research Areas: Signal Transduction

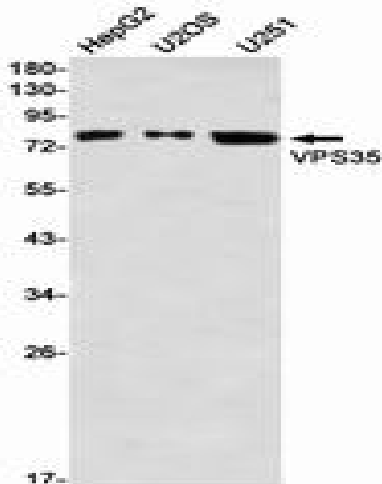
Storage & Shipping: Store at -20°C. Avoid repeated freezing and thawing



Immunohistochemistry analysis of paraffin-embedded Human lung cancer using VPS35 antibody. High-pressure and temperature Sodium Citrate pH 6.0 was used for antigen retrieval.



Western blot analysis of VPS35 in 3T3, mouse brain, rat brain, rat kidney lysates using VPS35 antibody.



Western blot analysis of VPS35 in HepG2, U2OS, U251 lysates using VPS35 antibody.