

## VPS35 RABBIT PAB

**Cat.#:** S221567

**Product Name:** Anti-VPS35 Rabbit Polyclonal Antibody

**Synonyms:** MEM3; PARK17

**UNIPROT ID:** Q96QK1 (Gene Accession - NP\_060676 )

**Background:** This gene belongs to a group of vacuolar protein sorting (VPS) genes. The encoded protein is a component of a large multimeric complex termed the retromer complex involved in retrograde transport of proteins from endosomes to the trans-Golgi network. The close structural similarity between the yeast and human proteins that make up this complex suggests a similarity in function. Expression studies in yeast and mammalian cells indicate that this protein interacts directly with VPS35, which serves as the core of the retromer complex.

**Immunogen:** Synthetic peptide of human VPS35

**Applications:** ELISA, WB, IHC

**Recommended Dilutions:** IHC: 50-200;WB: 1000-5000;ELISA: 5000-10000

**Host Species:** Rabbit

**Clonality:** Rabbit Polyclonal

**Isotype:** Immunogen-specific rabbit IgG

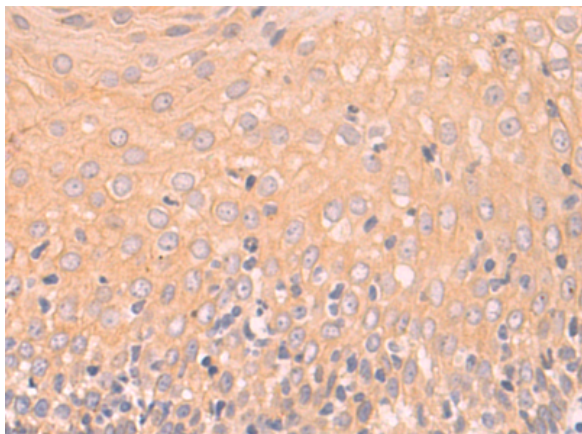
**Purification:** Antigen affinity purification

**Species Reactivity:** Human, Mouse

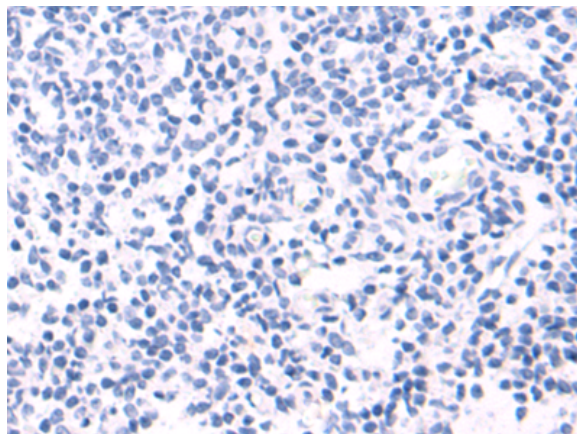
**Constituents:** PBS (without Mg<sup>2+</sup> and Ca<sup>2+</sup>), pH 7.4, 150 mM NaCl, 0.05% Sodium Azide and 40% glycerol

**Research Areas:** Signal Transduction

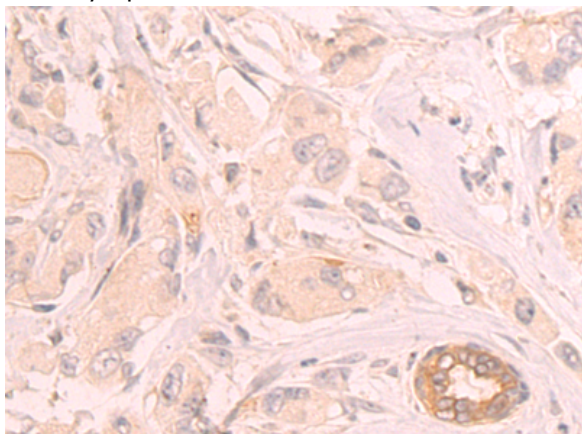
**Storage & Shipping:** Store at -20°C. Avoid repeated freezing and thawing



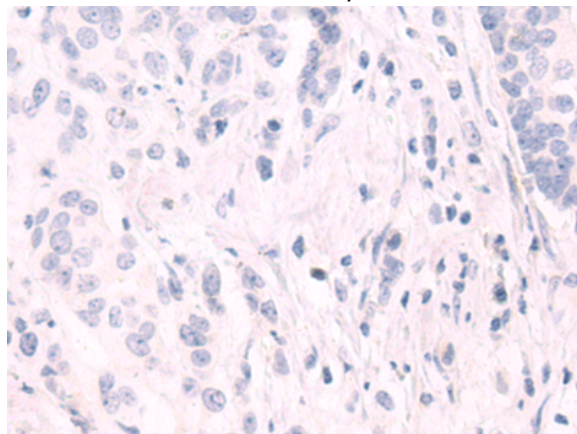
Immunohistochemistry analysis of paraffin embedded Human tonsil tissue using 221567(VPS35 Antibody) at a dilution of 1/50(Cytoplasm).



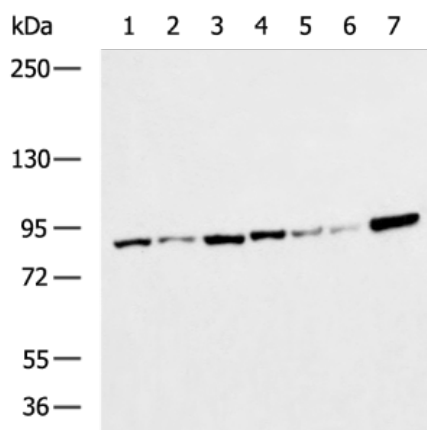
In comparison with the IHC on the left, the same paraffin-embedded Human tonsil tissue is first treated with the synthetic peptide and then with 221567(Anti-VPS35 Antibody) at dilution 1/50.



The image on the left is immunohistochemistry of paraffin-embedded Human breast cancer tissue using 221567(Anti-VPS35 Antibody) at a dilution of 1/50.



In comparison with the IHC on the left, the same paraffin-embedded Human breast cancer tissue is first treated with synthetic peptide and then with D263212(Anti-VPS35 Antibody) at dilution 1/50.



Gel: 6%SDS-PAGE, Lysate: 40 µg;  
 Lane 1-7: K562, MCF-7, Raji, HepG2, Hela, A549,  
 Mouse fetal brain tissue lysates;  
 Primary antibody: 221567(VPS35 Antibody) at  
 dilution 1/700;  
 Secondary antibody: HRP-conjugated Goat anti  
 rabbit IgG at 1/5000 dilution;  
 Exposure time: 30 seconds



# Product Description

Pioneering GTPase and Oncogene Product Development since 2010

---