

VPS51 RABBIT PAB

Cat.#: S215398

Product Name: Anti-VPS51 Rabbit Polyclonal Antibody

Synonyms: FFR; ANG2; ANG3; C11orf2; C11orf3

UNIPROT ID: Q9UID3 (Gene Accession - NP_037397)

Background: This gene encodes a member of the vacuolar protein sorting-associated protein 51 family. The encoded protein is a component of the Golgi-associated retrograde protein complex which acts as a tethering factor for carriers in retrograde transport from the early and late endosomes to the trans-Golgi network. Alternative splicing results in multiple transcript variants.

Immunogen: Synthetic peptide of human VPS51

Applications: ELISA, IHC

Recommended Dilutions: IHC: 40-200; ELISA: 5000-10000

Host Species: Rabbit

Clonality: Rabbit Polyclonal

Isotype: Immunogen-specific rabbit IgG

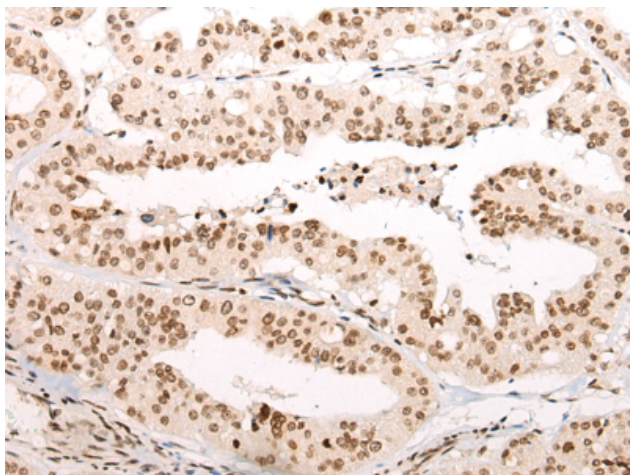
Purification: Antigen affinity purification

Species Reactivity: Human, Mouse

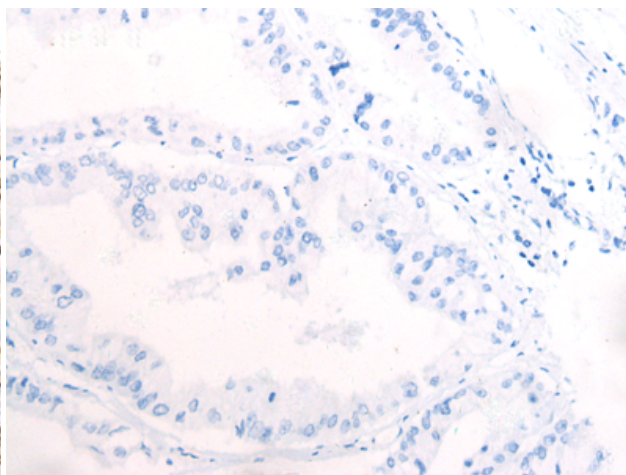
Constituents: PBS (without Mg²⁺ and Ca²⁺), pH 7.4, 150 mM NaCl, 0.05% Sodium Azide and 40% glycerol

Research Areas: Signal Transduction

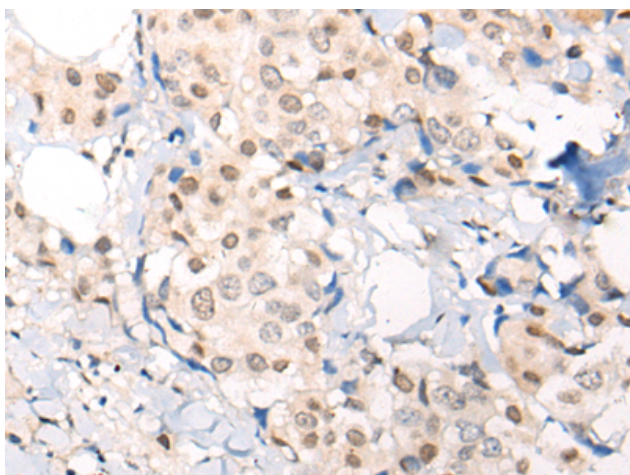
Storage & Shipping: Store at -20°C. Avoid repeated freezing and thawing



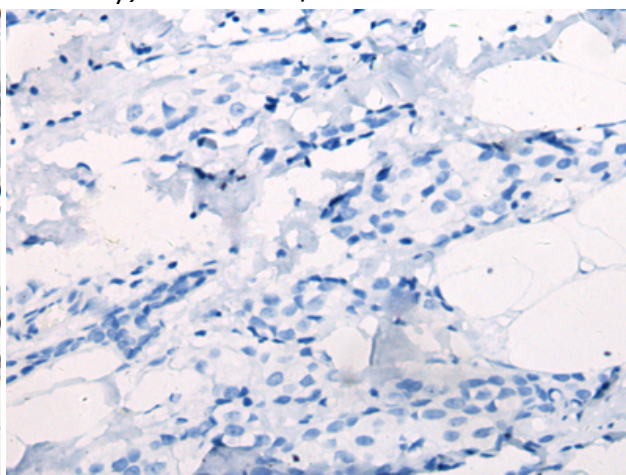
Immunohistochemistry analysis of paraffin embedded Human liver cancer tissue using 215398(VPS51 Antibody) at a dilution of 1/65(Nucleus).



In comparison with the IHC on the left, the same paraffin-embedded Human liver cancer tissue is first treated with the synthetic peptide and then with 215398(Anti-VPS51 Antibody) at dilution 1/65.



The image on the left is immunohistochemistry of paraffin-embedded Human breast cancer tissue using 215398(Anti-VPS51 Antibody) at a dilution of 1/65.



In comparison with the IHC on the left, the same paraffin-embedded Human breast cancer tissue is first treated with synthetic peptide and then with D163319(Anti-VPS51 Antibody) at dilution 1/65.