

VWCE RABBIT PAB

Cat.#: S221110

Product Name: Anti-VWCE Rabbit Polyclonal Antibody

Synonyms: VWCI; URG11

UNIPROT ID: Q96DN2 (Gene Accession - NP_689931)

Background: May be a regulatory element in the beta-catenin signaling pathway and a target for chemoprevention of hepatocellular carcinoma.

Immunogen: Synthetic peptide of human VWCE

Applications: ELISA, IHC

Recommended Dilutions: IHC: 25-100; ELISA: 2000-5000

Host Species: Rabbit

Clonality: Rabbit Polyclonal

Isotype: Immunogen-specific rabbit IgG

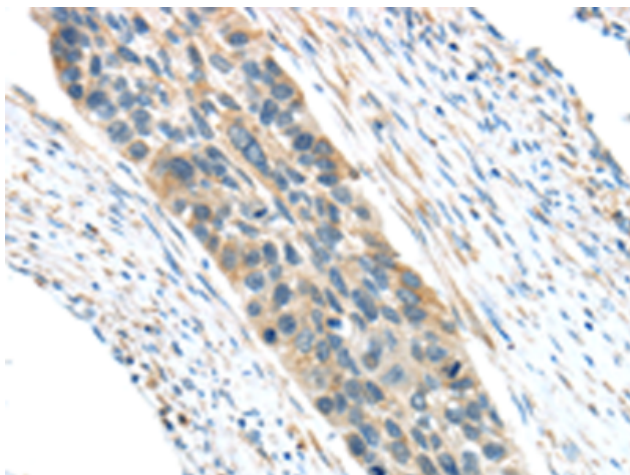
Purification: Antigen affinity purification

Species Reactivity: Human

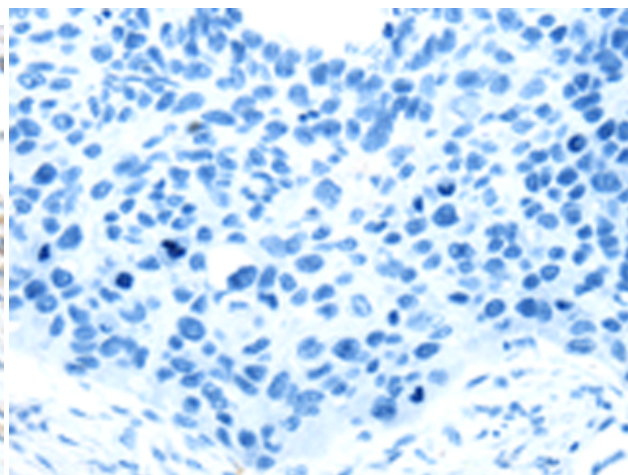
Constituents: PBS (without Mg²⁺ and Ca²⁺), pH 7.4, 150 mM NaCl, 0.05% Sodium Azide and 40% glycerol

Research Areas: Cell Biology

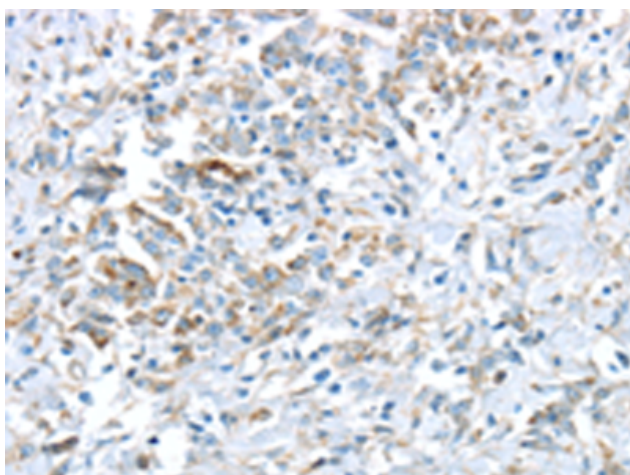
Storage & Shipping: Store at -20°C. Avoid repeated freezing and thawing



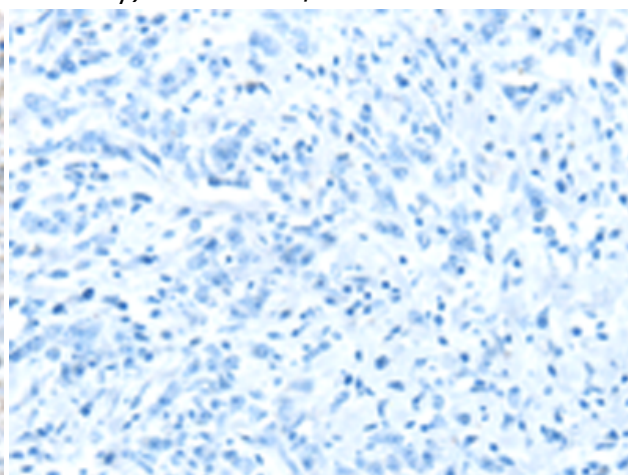
Immunohistochemistry analysis of paraffin embedded Human esophagus cancer tissue using 221110 (VWCE Antibody) at a dilution of 1/30 (Cytoplasm).



In comparison with the IHC on the left, the same paraffin-embedded Human esophagus cancer tissue is first treated with the synthetic peptide and then with 221110 (Anti-VWCE Antibody) at dilution 1/30.



The image on the left is immunohistochemistry of paraffin-embedded Human gastric cancer tissue using 221110 (Anti-VWCE Antibody) at a dilution of 1/30.



In comparison with the IHC on the left, the same paraffin-embedded Human gastric cancer tissue is first treated with synthetic peptide and then with D262486 (Anti-VWCE Antibody) at dilution 1/30.