

## WDFY4 RABBIT PAB

**Cat.#:** S218283

**Product Name:** Anti-WDFY4 Rabbit Polyclonal Antibody

**Synonyms:** C10orf64

**UNIPROT ID:** Q6ZS81 (Gene Accession - BC034937 )

**Background:** WDFY4 is predominantly expressed in the immune tissues. The function of WDFY4 is not well known;

**Immunogen:** Fusion protein of human WDFY4

**Applications:** ELISA, IHC

**Recommended Dilutions:** IHC: 40-200; ELISA: 5000-10000

**Host Species:** Rabbit

**Clonality:** Rabbit Polyclonal

**Isotype:** Immunogen-specific rabbit IgG

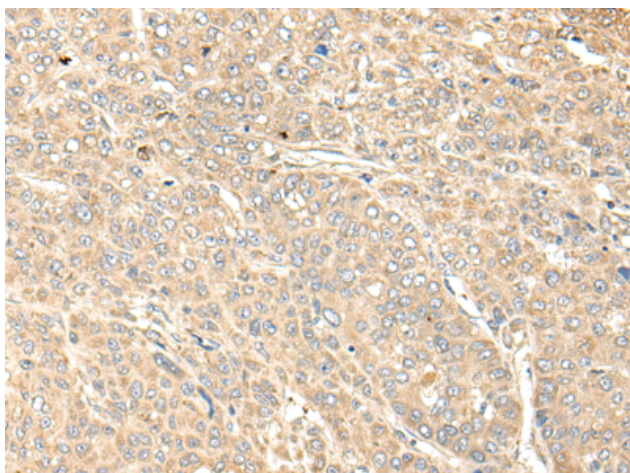
**Purification:** Antigen affinity purification

**Species Reactivity:** Human

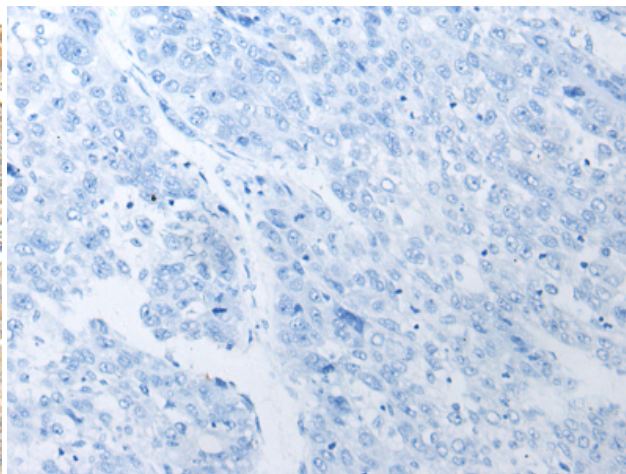
**Constituents:** PBS (without Mg<sup>2+</sup> and Ca<sup>2+</sup>), pH 7.4, 150 mM NaCl, 0.05% Sodium Azide and 40% glycerol

**Research Areas:** Cell Biology

**Storage & Shipping:** Store at -20°C. Avoid repeated freezing and thawing



Immunohistochemistry analysis of paraffin embedded Human liver cancer tissue using 218283(WDFY4 Antibody) at a dilution of 1/50(Cytoplasm).



In comparison with the IHC on the left, the same paraffin-embedded Human liver cancer tissue is first treated with the fusion protein and then with 218283(Anti-WDFY4 Antibody) at dilution 1/50.