

WDR11 RABBIT PAB

Cat.#: S221543

Product Name: Anti-WDR11 Rabbit Polyclonal Antibody

Synonyms: DR11; HH14; BRWD2; WDR15

UNIPROT ID: Q9BZH6 (Gene Accession - NP_060587)

Background: This gene encodes a member of the WD repeat protein family. WD repeats are minimally conserved regions of approximately 40 amino acids typically bracketed by gly-his and trp-aspartic acid (GH-WD), which may facilitate formation of heterotrimeric or multiprotein complexes. Members of this family are involved in a variety of cellular processes, including cell cycle progression, signal transduction, apoptosis, and gene regulation. This gene is located in the chromosome 10q25-26 region, which is frequently deleted in gliomas and tumors of other tissues, and is disrupted by the t(10;19) translocation rearrangement in glioblastoma cells. The gene location suggests that it is a candidate gene for the tumor suppressor locus.

Immunogen: Synthetic peptide of human WDR11

Applications: ELISA, WB, IHC

Recommended Dilutions: IHC: 25-100;WB: 200-1000;ELISA: 5000-10000

Host Species: Rabbit

Clonality: Rabbit Polyclonal

Isotype: Immunogen-specific rabbit IgG

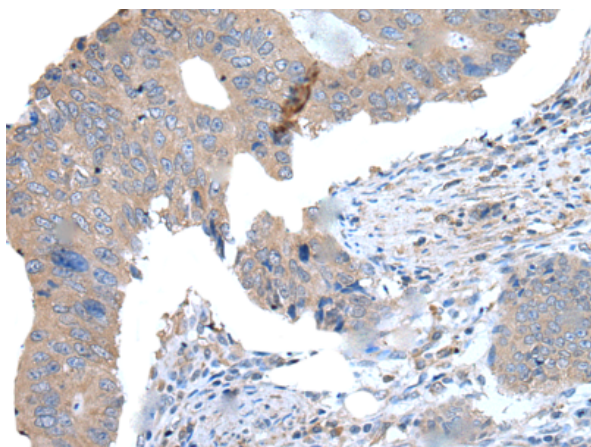
Purification: Antigen affinity purification

Species Reactivity: Human

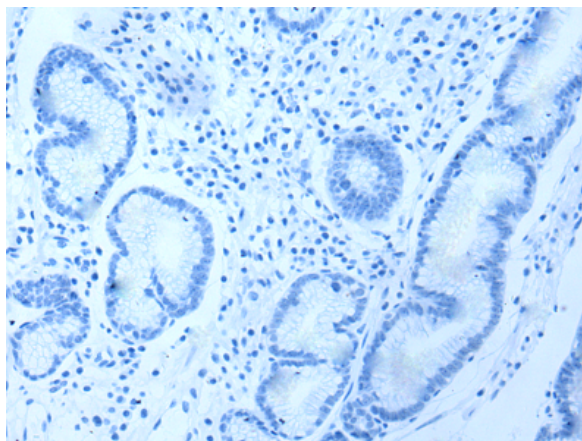
Constituents: PBS (without Mg²⁺ and Ca²⁺), pH 7.4, 150 mM NaCl, 0.05% Sodium Azide and 40% glycerol

Research Areas: Cancer

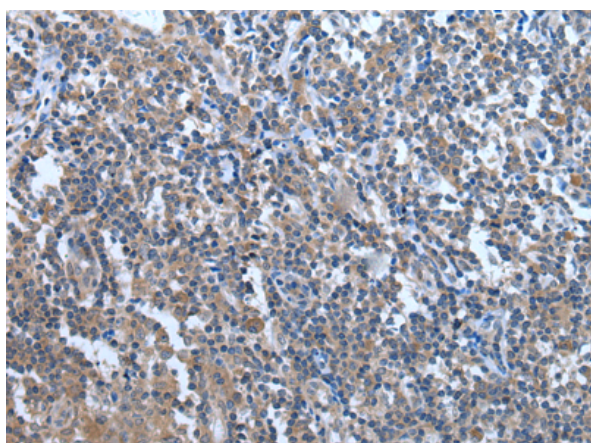
Storage & Shipping: Store at -20°C. Avoid repeated freezing and thawing



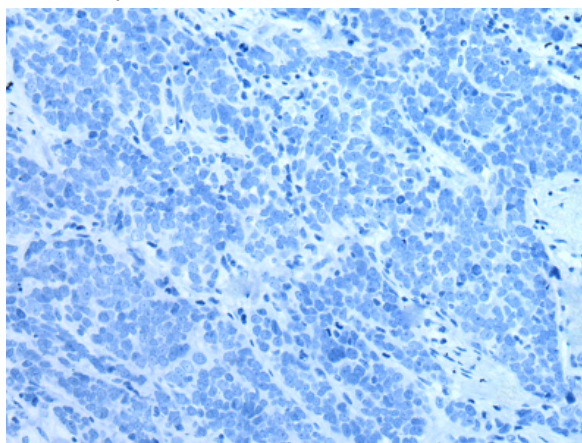
Immunohistochemistry analysis of paraffin embedded Human colorectal cancer tissue using 221543(WDR11 Antibody) at a dilution of 1/25(Cytoplasm).



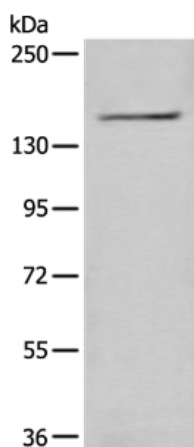
In comparison with the IHC on the left, the same paraffin-embedded Human colorectal cancer tissue is first treated with the synthetic peptide and then with 221543(Anti-WDR11 Antibody) at dilution 1/25.



The image on the left is immunohistochemistry of paraffin-embedded Human tonsil tissue using 221543(Anti-WDR11 Antibody) at a dilution of 1/25.



In comparison with the IHC on the left, the same paraffin-embedded Human tonsil tissue is first treated with synthetic peptide and then with D263184(Anti-WDR11 Antibody) at dilution 1/25.



Gel: 6%SDS-PAGE, Lysate: 40 µg;
Lane: HeLa cell lysate;
Primary antibody: 221543(WDR11 Antibody) at dilution 1/250;
Secondary antibody: Goat anti rabbit IgG at 1/8000 dilution;
Exposure time: 50 seconds



Product Description

Pioneering GTPase and Oncogene Product Development since 2010
