

## WDR18 RABBIT PAB

**Cat.#:** S218022

**Product Name:** Anti-WDR18 Rabbit Polyclonal Antibody

**Synonyms:** Ipi3; R32184\_1

**UNIPROT ID:** Q9BV38 (Gene Accession - BC001648 )

**Background:** This gene encodes a member of the WD repeat protein family. WD repeats are minimally conserved regions of approximately 40 amino acids typically bracketed by gly-his and trp-aspartic acid (GH-WD), which may facilitate formation of heterotrimeric or multiprotein complexes. Members of this family are involved in a variety of cellular processes, including cell cycle progression, signal transduction, apoptosis, and gene regulation.

**Immunogen:** Fusion protein of human WDR18

**Applications:** ELISA, IHC

**Recommended Dilutions:** IHC: 25-100; ELISA: 2000-5000

**Host Species:** Rabbit

**Clonality:** Rabbit Polyclonal

**Isotype:** Immunogen-specific rabbit IgG

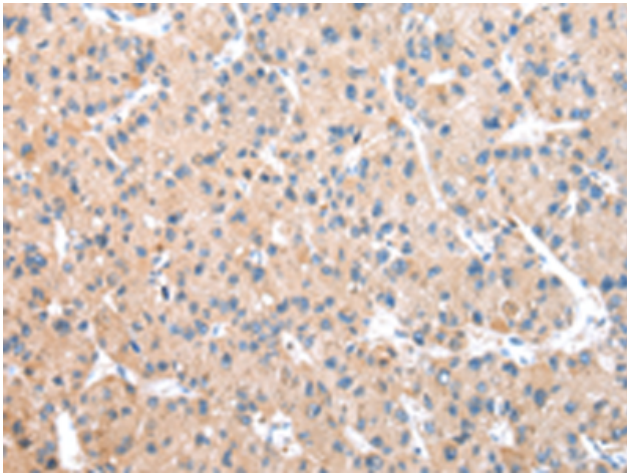
**Purification:** Antigen affinity purification

**Species Reactivity:** Human, Mouse

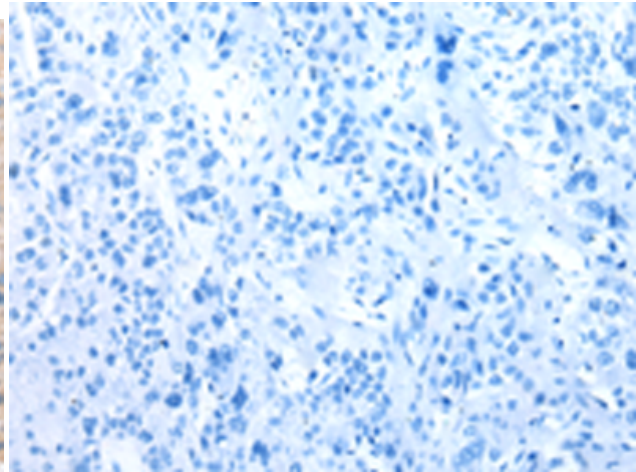
**Constituents:** PBS (without Mg<sup>2+</sup> and Ca<sup>2+</sup>), pH 7.4, 150 mM NaCl, 0.05% Sodium Azide and 40% glycerol

**Research Areas:** Cell Biology

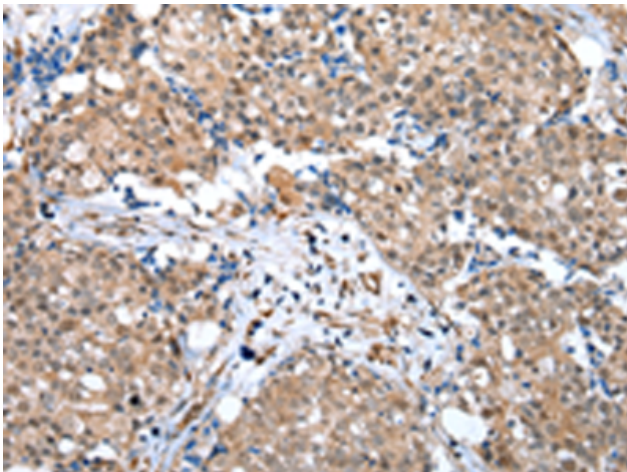
**Storage & Shipping:** Store at -20°C. Avoid repeated freezing and thawing



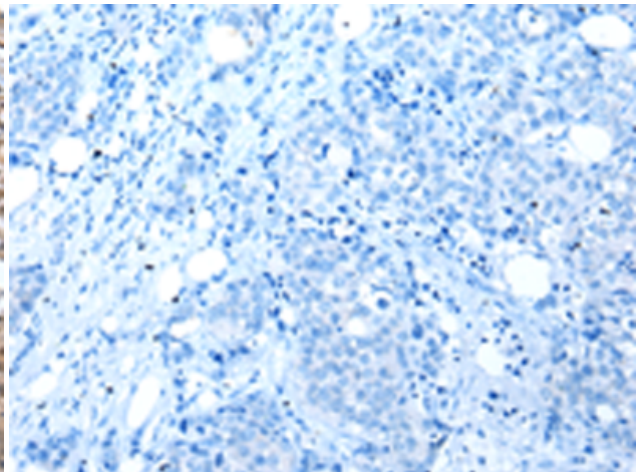
Immunohistochemistry analysis of paraffin embedded Human liver cancer tissue using 218022(WDR18 Antibody) at a dilution of 1/25(Cytoplasm or Nucleus).



In comparison with the IHC on the left, the same paraffin-embedded Human liver cancer tissue is first treated with the fusion protein and then with 218022(Anti-WDR18 Antibody) at dilution 1/25.



The image on the left is immunohistochemistry of paraffin-embedded Human breast cancer tissue using 218022(Anti-WDR18 Antibody) at a dilution of 1/25.



In comparison with the IHC on the left, the same paraffin-embedded Human breast cancer tissue is first treated with fusion protein and then with D223564(Anti-WDR18 Antibody) at dilution 1/25.