

WDR45B RABBIT PAB

Cat.#: S214889

Product Name: Anti-WDR45B Rabbit Polyclonal Antibody

Synonyms: WIPI3; WDR45L; WIPI-3; NEDSBAS

UNIPROT ID: Q5MNZ6 (Gene Accession - NP_062559)

Background: This gene encodes a member of the WIPI or SVPI family of WD40 repeat-containing proteins. The protein contains seven WD40 repeats that are thought to fold into a beta-propeller structure that mediates protein-protein interactions, and a conserved motif for interaction with phospholipids. The human genome contains several pseudogenes of this gene

Immunogen: Synthetic peptide of human WDR45B

Applications: ELISA, IHC

Recommended Dilutions: IHC: 50-200; ELISA: 5000-10000

Host Species: Rabbit

Clonality: Rabbit Polyclonal

Isotype: Immunogen-specific rabbit IgG

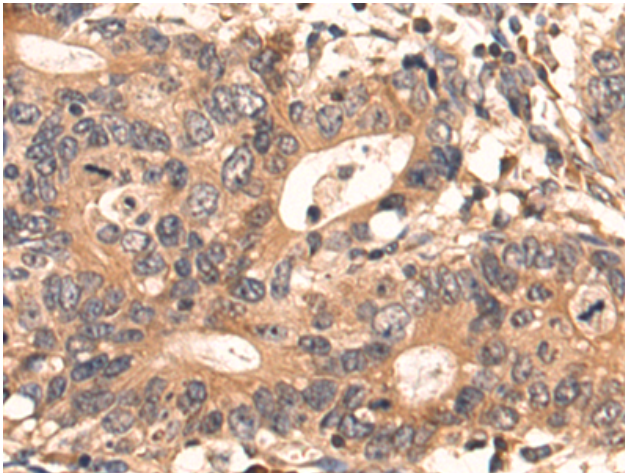
Purification: Antigen affinity purification

Species Reactivity: Human, Mouse

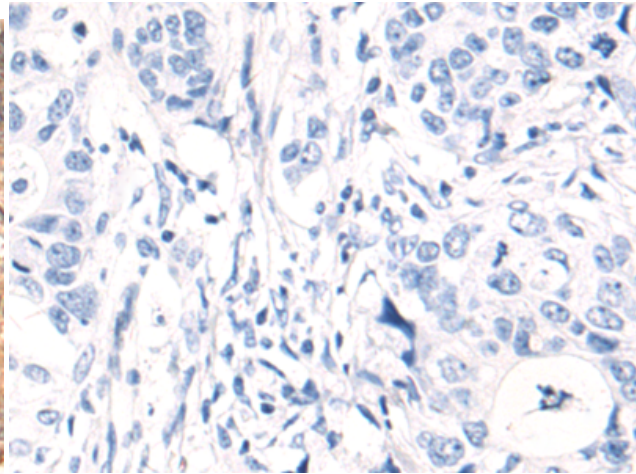
Constituents: PBS (without Mg²⁺ and Ca²⁺), pH 7.4, 150 mM NaCl, 0.05% Sodium Azide and 40% glycerol

Research Areas: Cell Biology

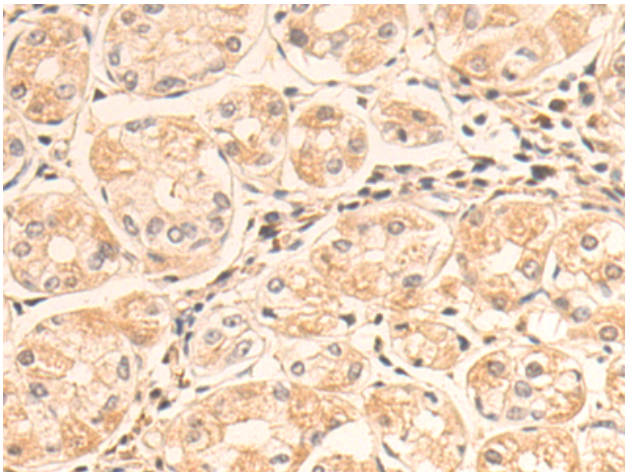
Storage & Shipping: Store at -20°C. Avoid repeated freezing and thawing



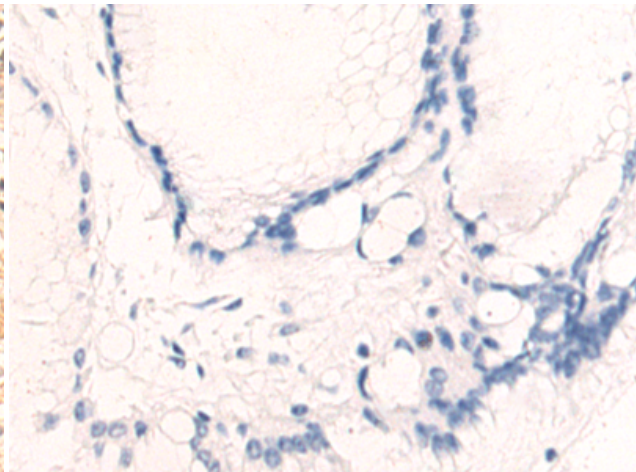
Immunohistochemistry analysis of paraffin embedded Human gastric cancer tissue using 214889(WDR45B Antibody) at a dilution of 1/50(Cytoplasm).



In comparison with the IHC on the left, the same paraffin-embedded Human gastric cancer tissue is first treated with the synthetic peptide and then with 214889(Anti-WDR45B Antibody) at dilution 1/50.



The image on the left is immunohistochemistry of paraffin-embedded Human esophagus cancer tissue using 214889(Anti-WDR45B Antibody) at a dilution of 1/50.



In comparison with the IHC on the left, the same paraffin-embedded Human esophagus cancer tissue is first treated with synthetic peptide and then with D162493(Anti-WDR45B Antibody) at dilution 1/50.