

## WDR5 RABBIT PAB

**Cat.#:** S218019

**Product Name:** Anti-WDR5 Rabbit Polyclonal Antibody

**Synonyms:** SWD3; BIG-3; CFAP89

**UNIPROT ID:** P61964 (Gene Accession - BC001635 )

**Background:** This gene encodes a member of the WD repeat protein family. WD repeats are minimally conserved regions of approximately 40 amino acids typically bracketed by gly-his and trp-asp (GH-WD), which may facilitate formation of heterotrimeric or multiprotein complexes. Members of this family are involved in a variety of cellular processes, including cell cycle progression, signal transduction, apoptosis, and gene regulation. This protein contains 7 WD repeats.

**Immunogen:** Fusion protein of human WDR5

**Applications:** ELISA, WB, IHC

**Recommended Dilutions:** IHC: 25-100;WB: 500-2000;ELISA: 2000-5000

**Host Species:** Rabbit

**Clonality:** Rabbit Polyclonal

**Isotype:** Immunogen-specific rabbit IgG

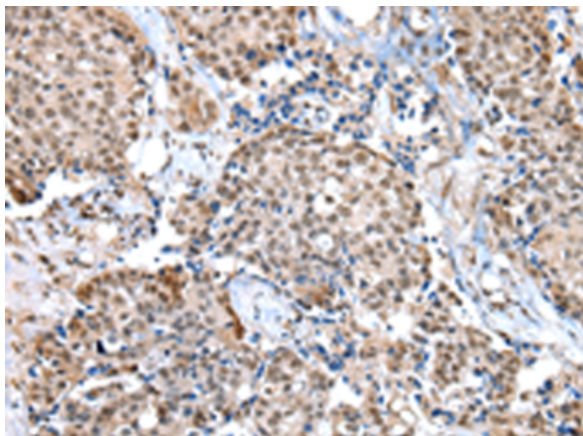
**Purification:** Antigen affinity purification

**Species Reactivity:** Human, Mouse, Rat

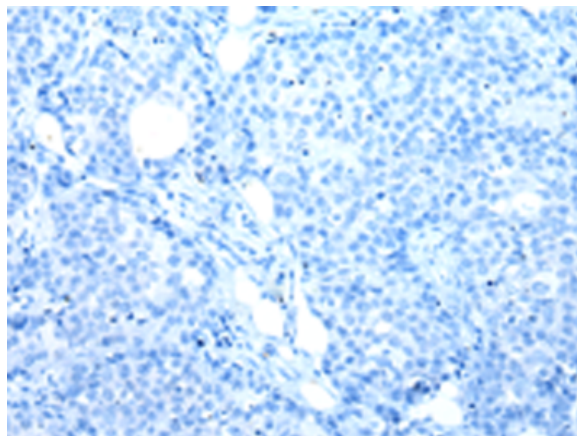
**Constituents:** PBS (without Mg<sup>2+</sup> and Ca<sup>2+</sup>), pH 7.4, 150 mM NaCl, 0.05% Sodium Azide and 40% glycerol

**Research Areas:** Epigenetics and Nuclear Signaling

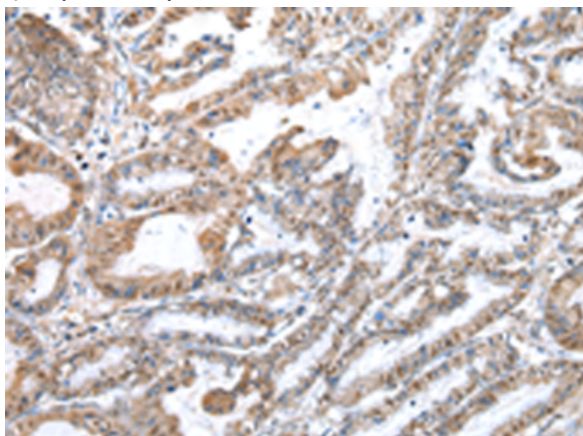
**Storage & Shipping:** Store at -20°C. Avoid repeated freezing and thawing



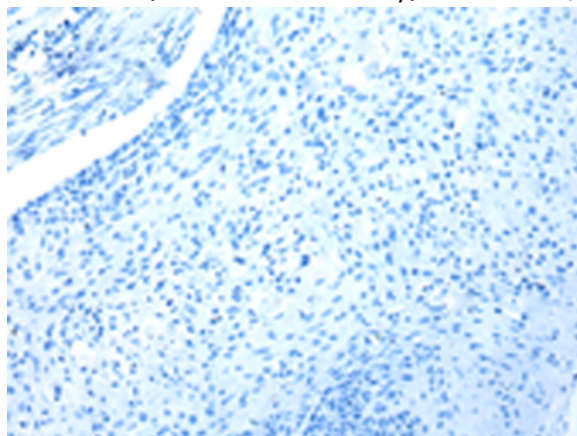
Immunohistochemistry analysis of paraffin embedded Human breast cancer tissue using 218019(WDR5 Antibody) at a dilution of 1/20(Nucleus).



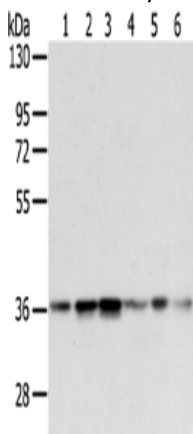
In comparison with the IHC on the left, the same paraffin-embedded Human breast cancer tissue is first treated with the fusion protein and then with 218019(Anti-WDR5 Antibody) at dilution 1/20.



The image on the left is immunohistochemistry of paraffin-embedded Human esophagus cancer tissue using 218019(Anti-WDR5 Antibody) at a dilution of 1/20.



In comparison with the IHC on the left, the same paraffin-embedded Human esophagus cancer tissue is first treated with fusion protein and then with D223561(Anti-WDR5 Antibody) at dilution 1/20.



Gel: 8%SDS-PAGE, Lysate: 40 µg;  
Lane 1-6: A375, 231 and PC3 cell, human lung cancer tissue, hela and NIH/3T3 cell;  
Primary antibody: 218019(WDR5 Antibody) at dilution 1/300;  
Secondary antibody: Goat anti rabbit IgG at 1/8000 dilution;  
Exposure time: 5 seconds



# Product Description

Pioneering GTPase and Oncogene Product Development since 2010

---