

## WDR5 RABBIT PAB

**Cat.#:** N225917

**Product Name:** Anti-WDR5 Rabbit pAb

**Synonyms:** WDR5; BIG3; WD repeat-containing protein 5; BMP2-induced 3-kb gene protein

**UNIPROT ID:** P61964

**Background:** Contributes to histone modification. May position the N-terminus of histone H3 for efficient trimethylation at 'Lys-4'. As part of the MLL1/MLL complex it is involved in methylation and dimethylation at 'Lys-4' of histone H3. H3 'Lys-4' methylation represents a specific tag for epigenetic transcriptional activation.

**Immunogen:** A synthesized peptide derived from human WDR5

**Applications:** WB,IHC-P,FC

**Recommended Dilutions:** WB: 1/500-1/1000 IHC: 1/50-1/100 FC: 1/50-1/100

**Host Species:** Rabbit

**Clonality:** Rabbit Polyclonal

**Clone ID:** -

**MW:** Calculated MW: 37 kDa; Observed MW: 37 kDa

**Isotype:** IgG

**Purification:** Affinity Chromatography

**Species Reactivity:** Human,Mouse,Rat

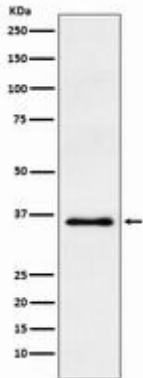
**Conjugation:** Unconjugated

**Modification:** Unmodified

**Constituents:** PBS (without Mg<sup>2+</sup> and Ca<sup>2+</sup>), pH 7.3 containing 50% glycerol, 0.5% BSA and 0.02% sodium azide

**Research Areas:** Epigenetics and Nuclear Signaling

**Storage & Shipping:** Store at -20°C. Avoid repeated freezing and thawing



Western blot analysis of WDR5 in HeLa lysates using WDR5 antibody.