

## WDR77 RABBIT PAB

**Cat.#:** S218028

**Product Name:** Anti-WDR77 Rabbit Polyclonal Antibody

**Synonyms:** p44; MEP50; MEP-50; HKMT1069; Nbla10071; p44/Mep50

**UNIPROT ID:** Q9BQA1 (Gene Accession - BC009411 )

**Background:** The protein encoded by this gene is an androgen receptor coactivator that forms a complex with protein arginine methyltransferase 5, which modifies specific arginines to dimethylarginines in several spliceosomal Sm proteins. The encoded protein may be involved in the early stages of prostate cancer, with most of the protein being nuclear-localized in benign cells but cytoplasmic in cancer cells. Several transcript variants encoding different isoforms have been found for this gene.

**Immunogen:** Fusion protein of human WDR77

**Applications:** ELISA, WB, IHC

**Recommended Dilutions:** IHC: 100-300;WB: 500-2000;ELISA: 5000-10000

**Host Species:** Rabbit

**Clonality:** Rabbit Polyclonal

**Isotype:** Immunogen-specific rabbit IgG

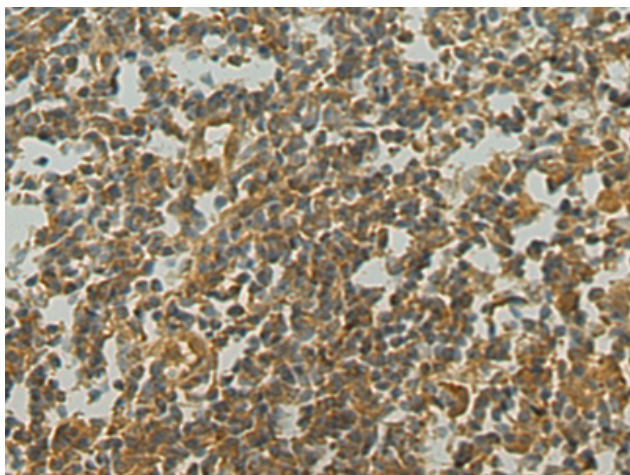
**Purification:** Antigen affinity purification

**Species Reactivity:** Human, Mouse, Rat

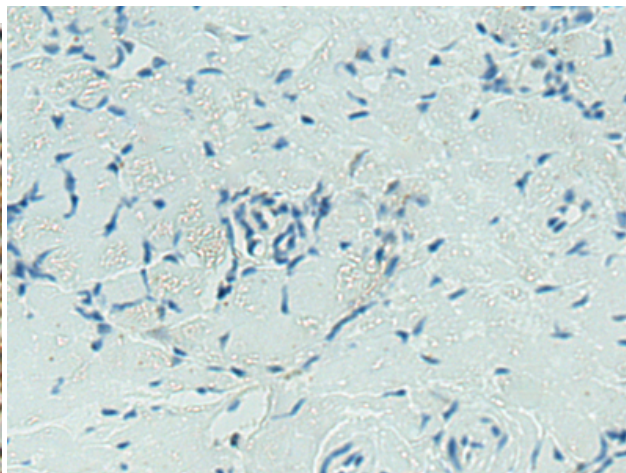
**Constituents:** PBS (without Mg<sup>2+</sup> and Ca<sup>2+</sup>), pH 7.4, 150 mM NaCl, 0.05% Sodium Azide and 40% glycerol

**Research Areas:** Signal Transduction, Epigenetics and Nuclear Signaling

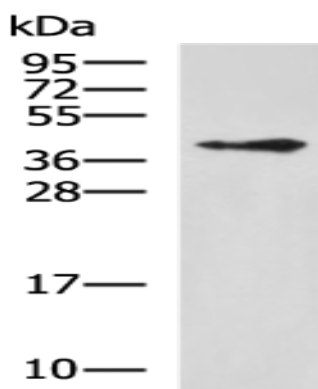
**Storage & Shipping:** Store at -20°C. Avoid repeated freezing and thawing



Immunohistochemistry analysis of paraffin embedded Human tonsil tissue using 218028(WDR77 Antibody) at a dilution of 1/120(Cytoplasm).



In comparison with the IHC on the left, the same paraffin-embedded Human tonsil tissue is first treated with the fusion protein and then with 218028(Anti-WDR77 Antibody) at dilution 1/120.



Gel: 12%SDS-PAGE, Lysate: 40  $\mu$ g;  
Lane: LNCAP cell lysate;  
Primary antibody: 218028(WDR77 Antibody) at dilution 1/500;  
Secondary antibody: HRP-conjugated Goat anti rabbit IgG at 1/5000 dilution;  
Exposure time: 1 minute