

## WDSUB1 RABBIT PAB

**Cat.#:** S221544

**Product Name:** Anti-WDSUB1 Rabbit Polyclonal Antibody

**Synonyms:** UBOX6; WDSAM1

**UNIPROT ID:** Q8N9V3 (Gene Accession - NP\_689741)

**Background:** Predicted to enable ubiquitin-protein transferase activity. Predicted to be involved in protein ubiquitination.

**Immunogen:** Synthetic peptide of human WDSUB1

**Applications:** ELISA, WB, IHC

**Recommended Dilutions:** IHC: 100-300;WB: 500-2000;ELISA: 5000-10000

**Host Species:** Rabbit

**Clonality:** Rabbit Polyclonal

**Isotype:** Immunogen-specific rabbit IgG

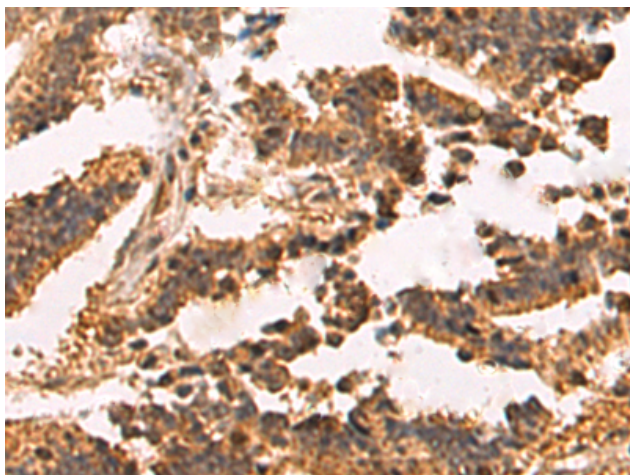
**Purification:** Antigen affinity purification

**Species Reactivity:** Human, Mouse

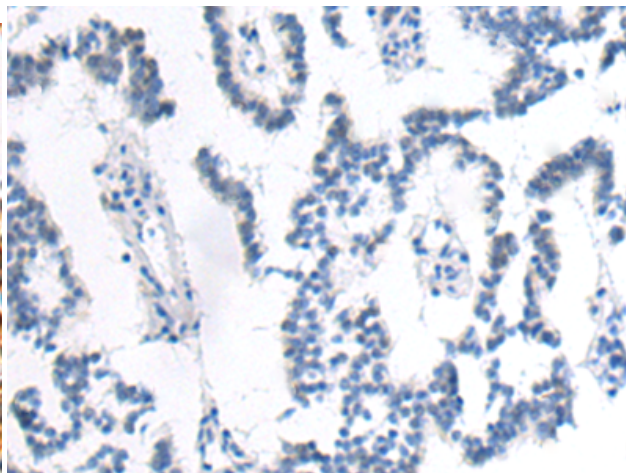
**Constituents:** PBS (without Mg<sup>2+</sup> and Ca<sup>2+</sup>), pH 7.4, 150 mM NaCl, 0.05% Sodium Azide and 40% glycerol

**Research Areas:** Cell Biology

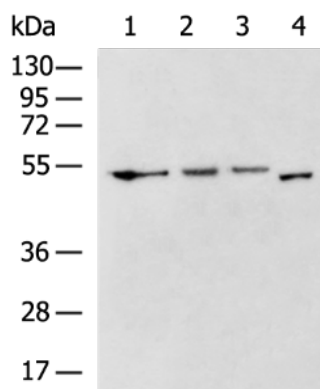
**Storage & Shipping:** Store at -20°C. Avoid repeated freezing and thawing



Immunohistochemistry analysis of paraffin embedded Human liver cancer tissue using 221544(WDSUB1 Antibody) at a dilution of 1/75(Cytoplasm).



In comparison with the IHC on the left, the same paraffin-embedded Human liver cancer tissue is first treated with the synthetic peptide and then with 221544(Anti-WDSUB1 Antibody) at dilution 1/75.



Gel: 8%SDS-PAGE, Lysate: 40 µg;  
 Lane 1-4: 231, 293T, A172 cell, Mouse kidney tissue lysates;  
 Primary antibody: 221544(WDSUB1 Antibody) at dilution 1/1000;  
 Secondary antibody: HRP-conjugated Goat anti rabbit IgG at 1/5000 dilution;  
 Exposure time: 2 minutes