

## WIPI2 RABBIT PAB

**Cat.#:** S221555

**Product Name:** Anti-WIPI2 Rabbit Polyclonal Antibody

**Synonyms:** Atg21; ATG18B; CGI-50; WIPI-2

**UNIPROT ID:** Q9Y4P8 (Gene Accession - NP\_056425 )

**Background:** WD40 repeat proteins are key components of many essential biologic functions. They regulate the assembly of multiprotein complexes by presenting a beta-propeller platform for simultaneous and reversible protein-protein interactions. Members of the WIPI subfamily of WD40 repeat proteins, such as WIPI2, have a 7-bladed propeller structure and contain a conserved motif for interaction with phospholipids.

**Immunogen:** Synthetic peptide of human WIPI2

**Applications:** ELISA, WB, IHC

**Recommended Dilutions:** IHC: 25-100;WB: 200-1000;ELISA: 5000-10000

**Host Species:** Rabbit

**Clonality:** Rabbit Polyclonal

**Isotype:** Immunogen-specific rabbit IgG

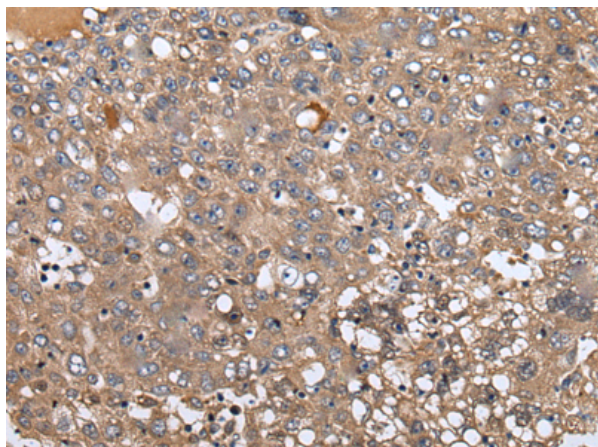
**Purification:** Antigen affinity purification

**Species Reactivity:** Human, Mouse, Rat

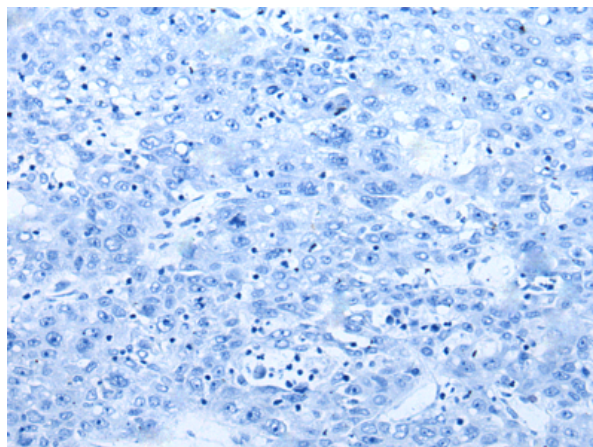
**Constituents:** PBS (without Mg<sup>2+</sup> and Ca<sup>2+</sup>), pH 7.4, 150 mM NaCl, 0.05% Sodium Azide and 40% glycerol

**Research Areas:** Cancer

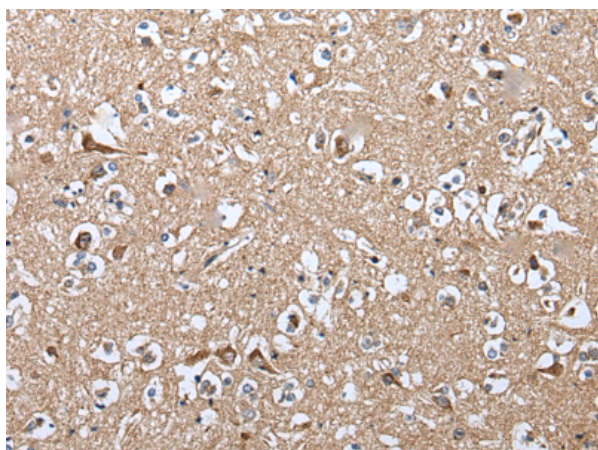
**Storage & Shipping:** Store at -20°C. Avoid repeated freezing and thawing



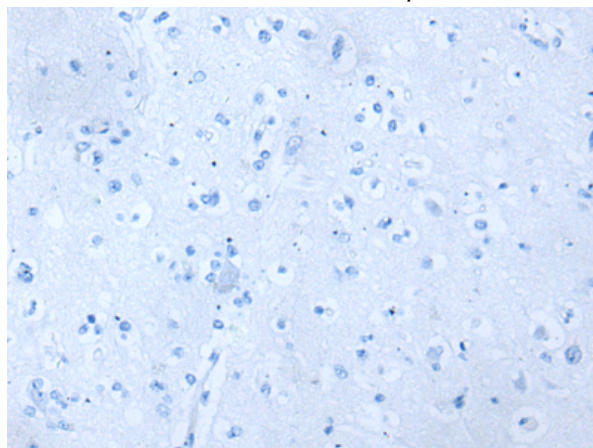
Immunohistochemistry analysis of paraffin embedded Human liver cancer tissue using 221555(WIPI2 Antibody) at a dilution of 1/30(Cytoplasm).



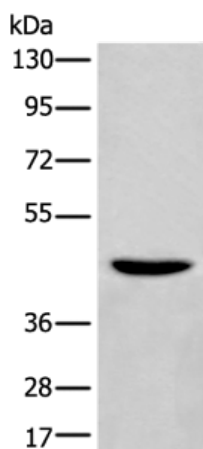
In comparison with the IHC on the left, the same paraffin-embedded Human liver cancer tissue is first treated with the synthetic peptide and then with 221555(Anti-WIPI2 Antibody) at dilution 1/30.



The image on the left is immunohistochemistry of paraffin-embedded Human brain tissue using 221555(Anti-WIPI2 Antibody) at a dilution of 1/30.



In comparison with the IHC on the left, the same paraffin-embedded Human brain tissue is first treated with synthetic peptide and then with D263199(Anti-WIPI2 Antibody) at dilution 1/30.



Gel: 8%SDS-PAGE, Lysate: 40 µg;  
Lane: Human heart tissue lysate;  
Primary antibody: 221555(WIPI2 Antibody) at dilution 1/300;  
Secondary antibody: Goat anti rabbit IgG at 1/8000 dilution;  
Exposure time: 5 seconds



# Product Description

Pioneering GTPase and Oncogene Product Development since 2010

---