

## WNK1 RABBIT PAB

**Cat.#:** S221120

**Product Name:** Anti-WNK1 Rabbit Polyclonal Antibody

**Synonyms:** KDP; PSK; p65; HSN2; HSAN2; PRKWINK1; PPP1R167

**UNIPROT ID:** Q9H4A3 (Gene Accession - NP\_061852 )

**Background:** This gene encodes a member of the WNK subfamily of serine/threonine protein kinases. The encoded protein may be a key regulator of blood pressure by controlling the transport of sodium and chloride ions. Mutations in this gene have been associated with pseudohypoaldosteronism type II and hereditary sensory neuropathy type II. Alternatively spliced transcript variants encoding different isoforms have been described but the full-length nature of all of them has yet to be determined.[provided by RefSeq, May 2010]

**Immunogen:** Synthetic peptide of human WNK1

**Applications:** ELISA, IHC

**Recommended Dilutions:** IHC: 50-100; ELISA: 5000-10000

**Host Species:** Rabbit

**Clonality:** Rabbit Polyclonal

**Isotype:** Immunogen-specific rabbit IgG

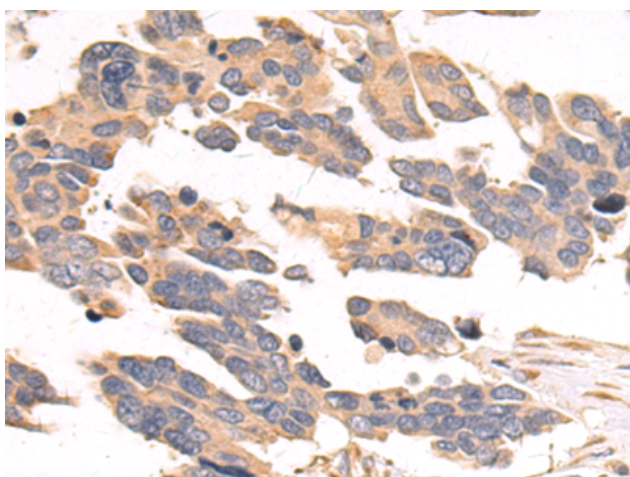
**Purification:** Antigen affinity purification

**Species Reactivity:** Human, Mouse, Rat

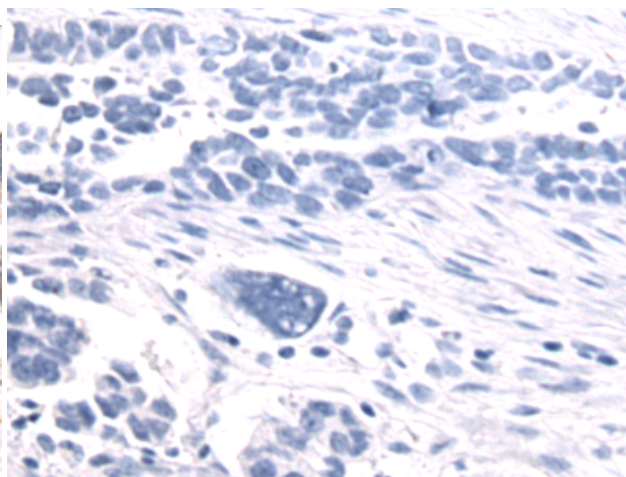
**Constituents:** PBS (without Mg<sup>2+</sup> and Ca<sup>2+</sup>), pH 7.4, 150 mM NaCl, 0.05% Sodium Azide and 40% glycerol

**Research Areas:** Signal Transduction

**Storage & Shipping:** Store at -20°C. Avoid repeated freezing and thawing



Immunohistochemistry analysis of paraffin embedded Human colorectal cancer tissue using 221120(WNK1 Antibody) at a dilution of 1/50(Cytoplasm).



In comparison with the IHC on the left, the same paraffin-embedded Human colorectal cancer tissue is first treated with the synthetic peptide and then with 221120(Anti-WNK1 Antibody) at dilution 1/50.