

WNT16 RABBIT PAB

Cat.#: N225168

Product Name: Anti-Wnt16 Rabbit pAb

Synonyms: WNT16; Protein Wnt-16

UNIPROT ID: Q9UBV4

Background: Ligand for members of the frizzled family of seven transmembrane receptors. Probable developmental protein. May be a signaling molecule which affects the development of discrete regions of tissues. Is likely to signal over only few cell diameters .

Immunogen: Synthesized peptide derived from the Internal region of human Wnt-16.

Applications: WB,ELISA

Recommended Dilutions: WB: 1/500-1/1000 ELISA: 1/10000

Host Species: Rabbit

Clonality: Rabbit Polyclonal

Clone ID: -

MW: Calculated MW: 41 kDa; Observed MW: 41 kDa

Isotype: IgG

Purification: Affinity Purified

Species Reactivity: Human,Mouse,Rat

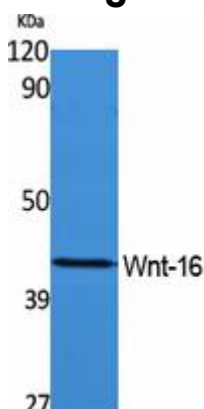
Conjugation: Unconjugated

Modification: Unmodified

Constituents: PBS (without Mg²⁺ and Ca²⁺), pH 7.3 containing 50% glycerol, 0.5% BSA and 0.02% sodium azide

Research Areas: Stem Cells

Storage & Shipping: Store at -20°C. Avoid repeated freezing and thawing



Western blot analysis of Wnt16 in rat kidney lysates using Wnt16 antibody.



Product Description

Pioneering GTPase and Oncogene Product Development since 2010
