

WNT2B RABBIT PAB

Cat.#: S221137

Product Name: Anti-WNT2B Rabbit Polyclonal Antibody

Synonyms: WNT13

UNIPROT ID: Q93097 (Gene Accession - NP_004176)

Background: This gene encodes a member of the wingless-type MMTV integration site (WNT) family of highly conserved, secreted signaling factors. WNT family members function in a variety of developmental processes including regulation of cell growth and differentiation and are characterized by a WNT-core domain. This gene may play a role in human development as well as carcinogenesis. Alternative splicing results in multiple transcript variants. [provided by RefSeq, May 2014.]

Immunogen: Synthetic peptide of human WNT2B

Applications: ELISA, IHC

Recommended Dilutions: IHC: 50-100; ELISA: 1000-2000

Host Species: Rabbit

Clonality: Rabbit Polyclonal

Isotype: Immunogen-specific rabbit IgG

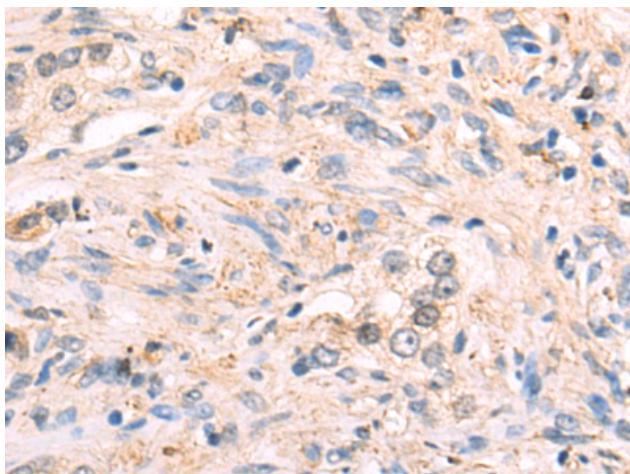
Purification: Antigen affinity purification

Species Reactivity: Human, Mouse

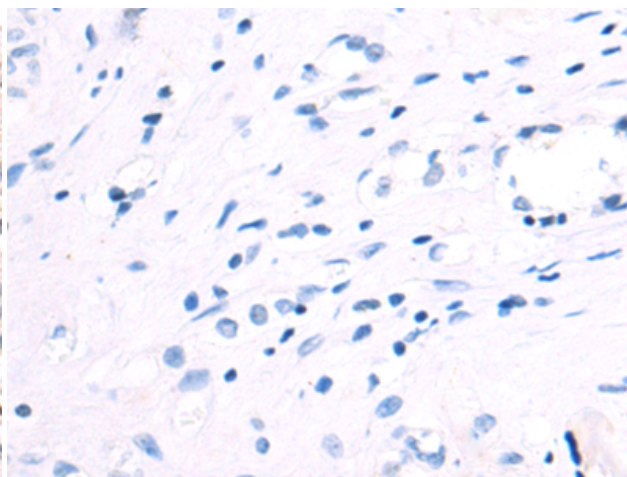
Constituents: PBS (without Mg²⁺ and Ca²⁺), pH 7.4, 150 mM NaCl, 0.05% Sodium Azide and 40% glycerol

Research Areas: Cancer, Signal Transduction

Storage & Shipping: Store at -20°C. Avoid repeated freezing and thawing



Immunohistochemistry analysis of paraffin embedded Human prostate cancer tissue using 221137(WNT2B Antibody) at a dilution of 1/50(Secreted).



In comparison with the IHC on the left, the same paraffin-embedded Human prostate cancer tissue is first treated with the synthetic peptide and then with 221137(Anti-WNT2B Antibody) at dilution 1/50.