

## WNT2B RABBIT PAB

**Cat.#:** N225941

**Product Name:** Anti-Wnt2b Rabbit pAb

**Synonyms:** WNT13; Wnt2b; XWNT2

**UNIPROT ID:** Q93097

**Background:** Ligand for members of the frizzled family of seven transmembrane receptors. Probable developmental protein. May be a signaling molecule which affects the development of discrete regions of tissues. Is likely to signal over only few cell diameters.

**Immunogen:** A synthesized peptide derived from human Wnt2b

**Applications:** WB, ICC/IF, FC

**Recommended Dilutions:** WB: 1/500-1/1000 IF: 1/50-1/200 FC: 1/50-1/100

**Host Species:** Rabbit

**Clonality:** Rabbit Polyclonal

**Clone ID:** -

**MW:** Calculated MW: 44 kDa; Observed MW: 44 kDa

**Isotype:** IgG

**Purification:** Affinity Chromatography

**Species Reactivity:** Human, Mouse, Rat

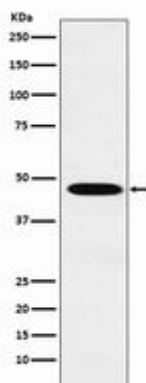
**Conjugation:** Unconjugated

**Modification:** Unmodified

**Constituents:** PBS (without Mg<sup>2+</sup> and Ca<sup>2+</sup>), pH 7.3 containing 50% glycerol, 0.5% BSA and 0.02% sodium azide

**Research Areas:** Stem Cells

**Storage & Shipping:** Store at -20°C. Avoid repeated freezing and thawing



Western blot analysis of Wnt2b in HepG2 lysates using Wnt2b antibody.



# Product Description

Pioneering GTPase and Oncogene Product Development since 2010

---