

## WWTR1 RABBIT PAB

**Cat.#:** S218541

**Product Name:** Anti-WWTR1 Rabbit Polyclonal Antibody

**Synonyms:** TAZ

**UNIPROT ID:** Q9GZV5 (Gene Accession - BC014052)

**Background:** Enables transcription coactivator activity. Involved in several processes, including hippo signaling; positive regulation of cell differentiation; and regulation of signal transduction. Located in cytosol and nuclear body.

**Immunogen:** Fusion protein of human WWTR1

**Applications:** ELISA, WB, IHC

**Recommended Dilutions:** IHC: 50-200;WB: 1000-5000;ELISA: 5000-10000

**Host Species:** Rabbit

**Clonality:** Rabbit Polyclonal

**Isotype:** Immunogen-specific rabbit IgG

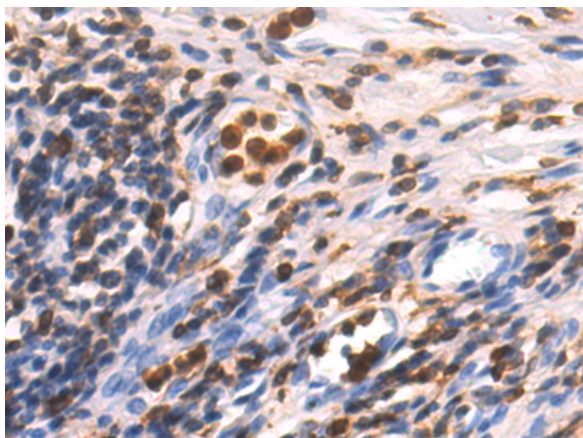
**Purification:** Antigen affinity purification

**Species Reactivity:** Human, Mouse

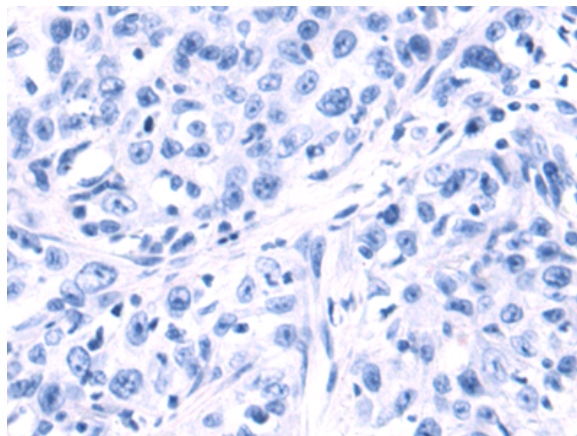
**Constituents:** PBS (without Mg<sup>2+</sup> and Ca<sup>2+</sup>), pH 7.4, 150 mM NaCl, 0.05% Sodium Azide and 40% glycerol

**Research Areas:** Epigenetics and Nuclear Signaling, Stem Cells

**Storage & Shipping:** Store at -20°C. Avoid repeated freezing and thawing

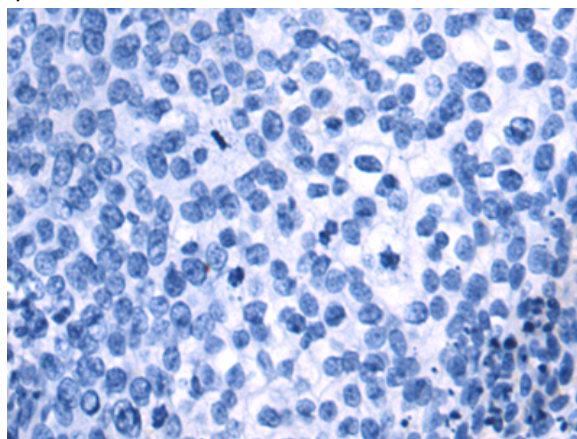


Immunohistochemistry analysis of paraffin embedded Human esophagus cancer tissue using 218541(WWTR1 Antibody) at a dilution of 1/80(Nucleus).

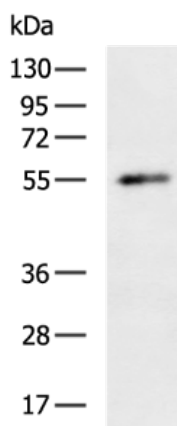


In comparison with the IHC on the left, the same paraffin-embedded Human esophagus cancer tissue is first treated with the fusion protein and then with 218541(Anti-WWTR1 Antibody) at dilution 1/80.

✘ The image on the left is immunohistochemistry of paraffin-embedded Human cervical cancer tissue using 218541(Anti-WWTR1 Antibody) at a dilution of 1/80.



In comparison with the IHC on the left, the same paraffin-embedded Human cervical cancer tissue is first treated with fusion protein and then with D224644(Anti-WWTR1 Antibody) at dilution 1/80.



Gel: 8%SDS-PAGE, Lysate: 40 µg;  
Lane: Mouse kidney tissue lysate;  
Primary antibody: 218541(WWTR1 Antibody) at dilution 1/1350;  
Secondary antibody: HRP-conjugated Goat anti rabbit IgG at 1/5000 dilution;  
Exposure time: 1 minute



# Product Description

Pioneering GTPase and Oncogene Product Development since 2010

---