

XAB2 RABBIT PAB

Cat.#: S215299

Product Name: Anti-XAB2 Rabbit Polyclonal Antibody

Synonyms: HCNP; HCRN; SYF1; NTC90

UNIPROT ID: Q9HCS7 (Gene Accession - NP_064581)

Background: Involved in mRNA splicing, via spliceosome; transcription, DNA-templated; and transcription-coupled nucleotide-excision repair. Located in nucleoplasm. Part of U2-type catalytic step 2 spliceosome.

Immunogen: Synthetic peptide of human XAB2

Applications: ELISA, WB, IHC

Recommended Dilutions: IHC: 50-200;WB: 1000-5000;ELISA: 5000-10000

Host Species: Rabbit

Clonality: Rabbit Polyclonal

Isotype: Immunogen-specific rabbit IgG

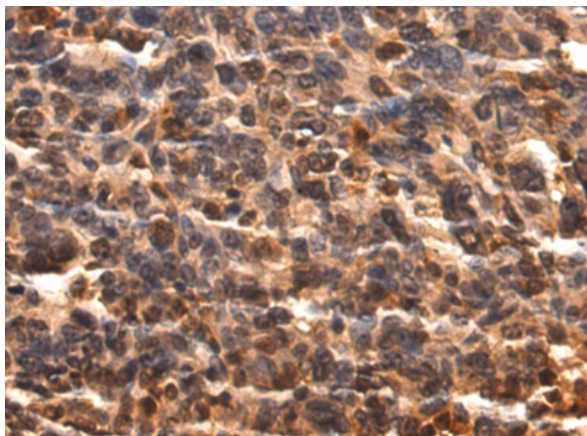
Purification: Antigen affinity purification

Species Reactivity: Human, Mouse, Rat

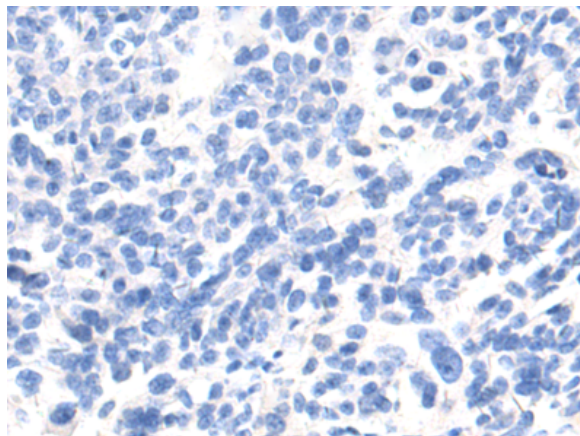
Constituents: PBS (without Mg²⁺ and Ca²⁺), pH 7.4, 150 mM NaCl, 0.05% Sodium Azide and 40% glycerol

Research Areas: Epigenetics and Nuclear Signaling

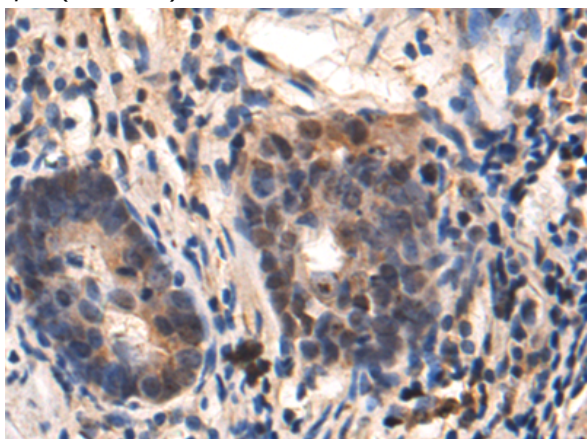
Storage & Shipping: Store at -20°C. Avoid repeated freezing and thawing



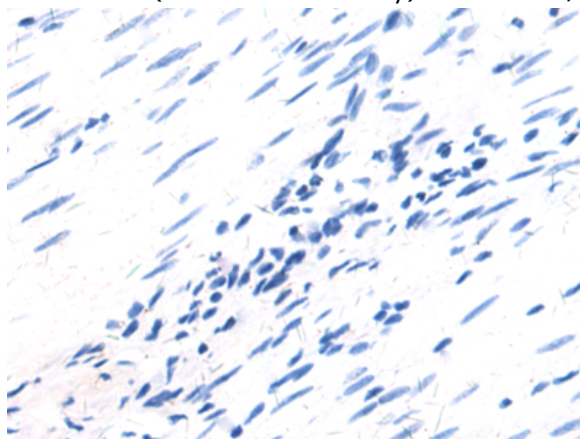
Immunohistochemistry analysis of paraffin embedded Human breast cancer tissue using 215299(XAB2 Antibody) at a dilution of 1/50(Nucleus).



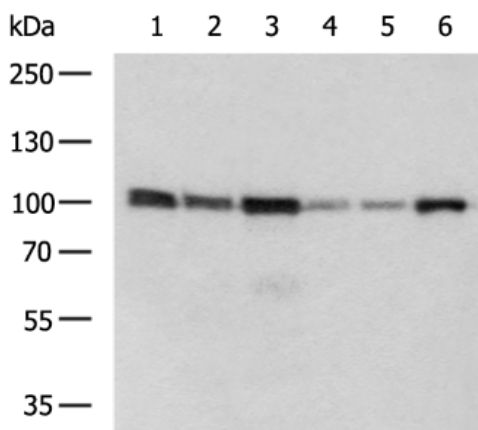
In comparison with the IHC on the left, the same paraffin-embedded Human breast cancer tissue is first treated with the synthetic peptide and then with 215299(Anti-XAB2 Antibody) at dilution 1/50.



The image on the left is immunohistochemistry of paraffin-embedded Human gastric cancer tissue using 215299(Anti-XAB2 Antibody) at a dilution of 1/50.



In comparison with the IHC on the left, the same paraffin-embedded Human gastric cancer tissue is first treated with synthetic peptide and then with D163175(Anti-XAB2 Antibody) at dilution 1/50.



Gel: 6%SDS-PAGE, Lysate: 40 µg;
 Lane 1-6: 293T, K562, HeLa, HepG2, PC3 and NIH/3T3 cell lysates;
 Primary antibody: 215299(XAB2 Antibody) at dilution 1/1000;
 Secondary antibody: HRP-conjugated Goat anti rabbit IgG at 1/5000 dilution;
 Exposure time: 2 seconds



Product Description

Pioneering GTPase and Oncogene Product Development since 2010
