

## XAB2 RABBIT PAB

**Cat.#:** S218035

**Product Name:** Anti-XAB2 Rabbit Polyclonal Antibody

**Synonyms:** HCNP; HCRN; SYF1; NTC90

**UNIPROT ID:** Q9HCS7 (Gene Accession - BC007208 )

**Background:** Involved in transcription-coupled repair (TCR), transcription and pre-mRNA splicing.

**Immunogen:** Fusion protein of human XAB2

**Applications:** ELISA, IHC

**Recommended Dilutions:** IHC: 20-100; ELISA: 2000-5000

**Host Species:** Rabbit

**Clonality:** Rabbit Polyclonal

**Isotype:** Immunogen-specific rabbit IgG

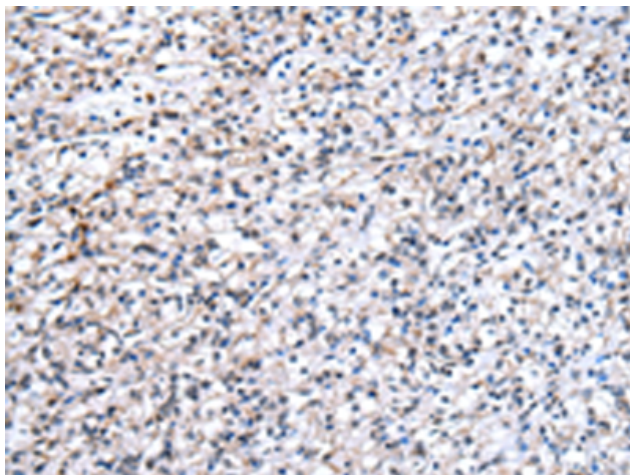
**Purification:** Antigen affinity purification

**Species Reactivity:** Human, Mouse, Rat

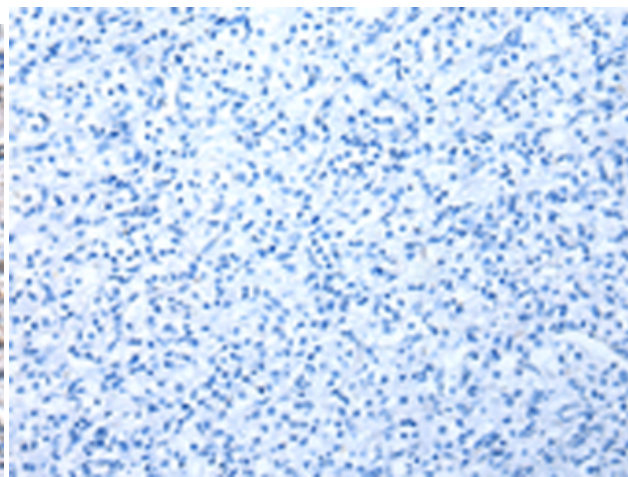
**Constituents:** PBS (without Mg<sup>2+</sup> and Ca<sup>2+</sup>), pH 7.4, 150 mM NaCl, 0.05% Sodium Azide and 40% glycerol

**Research Areas:** Epigenetics and Nuclear Signaling

**Storage & Shipping:** Store at -20°C. Avoid repeated freezing and thawing



Immunohistochemistry analysis of paraffin embedded Human prostate cancer tissue using 218035(XAB2 Antibody) at a dilution of 1/25(Nucleus).



In comparison with the IHC on the left, the same paraffin-embedded Human prostate cancer tissue is first treated with the fusion protein and then with 218035(Anti-XAB2 Antibody) at dilution 1/25.