

XCT RABBIT MAB

Cat.#: N263087

Product Name: Anti-xCT Rabbit Monoclonal Antibody

Synonyms: CCBRI; Cysteine/glutamate transporter; SLC7A11; solute carrier family 7; xCT

UNIPROT ID: Q9UPY5

Background: Sodium-independent, high-affinity exchange of anionic amino acids with high specificity for anionic form of cystine and glutamate.

Immunogen: A synthetic peptide of human xCT

Applications: WB,IP

Recommended Dilutions: WB: 1/500-1/1000 IP: 1/20

Host Species: Rabbit

Clonality: Rabbit Monoclonal

Clone ID: R08-2C5

MW: Calculated MW: 55 kDa; Observed MW: 55 kDa

Isotype: IgG

Purification: Affinity Purified

Species Reactivity: Human,Mouse

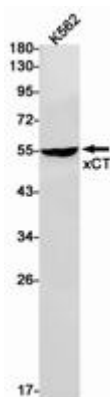
Conjugation: Unconjugated

Modification: Unmodified

Constituents: PBS (without Mg²⁺ and Ca²⁺), pH 7.3 containing 50% glycerol, 0.5% BSA and 0.02% sodium azide

Research Areas: Signal Transduction

Storage & Shipping: Store at -20°C. Avoid repeated freezing and thawing



Western blot analysis of xCT in K562 lysates using xCT antibody.



Product Description

Pioneering GTPase and Oncogene Product Development since 2010
