

## XKR6 RABBIT PAB

**Cat.#:** S211781

**Product Name:** Anti-XKR6 Rabbit Polyclonal Antibody

**Synonyms:** XRG6; C8orf5; C8orf7; C8orf21

**UNIPROT ID:** Q5GH73 (Gene Accession - BC024146 )

**Background:** XK is a 444 amino acid protein that spans the membrane 10 times and carries the ubiquitous antigen, K<sub>x</sub> which determines blood type. The XK (X-linked K<sub>x</sub> blood group)-related gene family are homologs of XK. XKR6 (XK-related protein 6) is a 641 amino acid multi-pass membrane protein that likely is a component of the XK/Kell complex of the Kell blood group system. The gene encoding XKR6 maps to human chromosome 8, which is made up of nearly 146 million bases and encodes about 800 genes. There are two isoforms of XKR6 that are produced as a result of alternative splicing events.

**Immunogen:** Fusion protein of human XKR6

**Applications:** ELISA, IHC

**Recommended Dilutions:** IHC: 150-300; ELISA: 5000-10000

**Host Species:** Rabbit

**Clonality:** Rabbit Polyclonal

**Isotype:** Immunogen-specific rabbit IgG

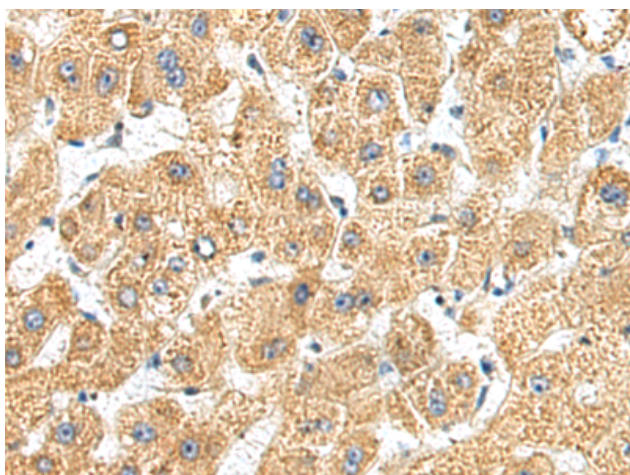
**Purification:** Antigen affinity purification

**Species Reactivity:** Human, Mouse, Rat

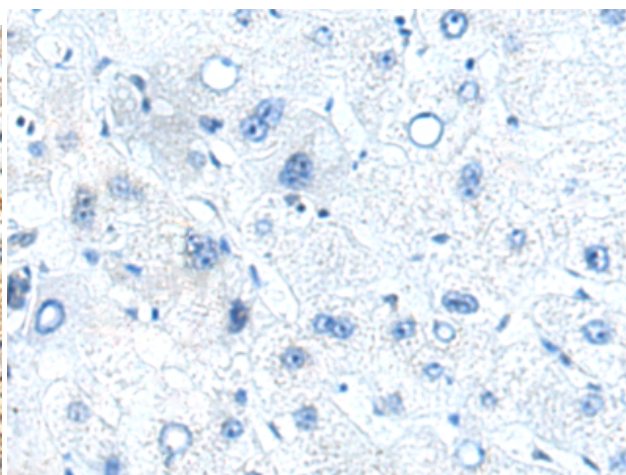
**Constituents:** PBS (without Mg<sup>2+</sup> and Ca<sup>2+</sup>), pH 7.4, 150 mM NaCl, 0.05% Sodium Azide and 40% glycerol

**Research Areas:** Cell Biology

**Storage & Shipping:** Store at -20°C. Avoid repeated freezing and thawing



Immunohistochemistry analysis of paraffin embedded Human liver cancer tissue using 211781(XKR6 Antibody) at a dilution of 1/160(Cytoplasm).



In comparison with the IHC on the left, the same paraffin-embedded Human liver cancer tissue is first treated with the fusion protein and then with 211781(Anti-XKR6 Antibody) at dilution 1/160.