

XPD RABBIT MAB

Cat.#: N263090

Product Name: Anti-XPD Rabbit Monoclonal Antibody

Synonyms: BTF2 p80; COFS2; CXPB; EM9; ERCC2; MAG; TFIIH p80; TTD; XPD; XPDC

UNIPROT ID: P18074

Background: ATP-dependent 5'-3' DNA helicase, component of the core-TFIIH basal transcription factor. Involved in nucleotide excision repair (NER) of DNA by opening DNA around the damage, and in RNA transcription by RNA polymerase II by anchoring the CDK-activating kinase (CAK) complex, composed of CDK7, cyclin H and MAT1, to the core-TFIIH complex. Involved in the regulation of vitamin-D receptor activity.

Immunogen: A synthetic peptide of human XPD

Applications: WB, ICC/IF

Recommended Dilutions: WB: 1/500-1/1000 IF: 1/50-1/200

Host Species: Rabbit

Clonality: Rabbit Monoclonal

Clone ID: R08-213

MW: Calculated MW: 87 kDa; Observed MW: 80 kDa

Isotype: IgG

Purification: Affinity Purified

Species Reactivity: Human

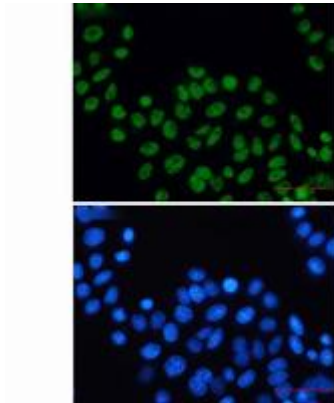
Conjugation: Unconjugated

Modification: Unmodified

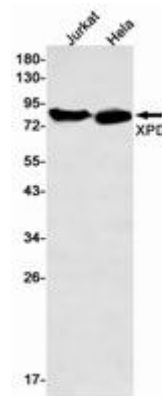
Constituents: PBS (without Mg²⁺ and Ca²⁺), pH 7.3 containing 50% glycerol, 0.5% BSA and 0.02% sodium azide

Research Areas: Epigenetics and Nuclear Signaling

Storage & Shipping: Store at -20°C. Avoid repeated freezing and thawing



Immunocytochemistry analysis of XPD (green) in HeLa using XPD antibody, and DAPI (blue)



Western blot analysis of XPD in Jurkat, HeLa lysates using XPD antibody.