

XPO1 RABBIT PAB

Cat.#: S217151

Product Name: Anti-XPO1 Rabbit Polyclonal Antibody

Synonyms: emb; CRM1; exp1; CRM-1

UNIPROT ID: O14980 (Gene Accession - BC032847)

Background: This cell-cycle-regulated gene encodes a protein that mediates leucine-rich nuclear export signal (NES)-dependent protein transport. The protein specifically inhibits the nuclear export of Rev and U snRNAs. It is involved in the control of several cellular processes by controlling the localization of cyclin B, MPAK, and MAPKAP kinase 2. This protein also regulates NFAT and AP-1.

Immunogen: Fusion protein of human XPO1

Applications: ELISA, WB, IHC

Recommended Dilutions: IHC: 25-100;WB: 200-1000;ELISA: 5000-10000

Host Species: Rabbit

Clonality: Rabbit Polyclonal

Isotype: Immunogen-specific rabbit IgG

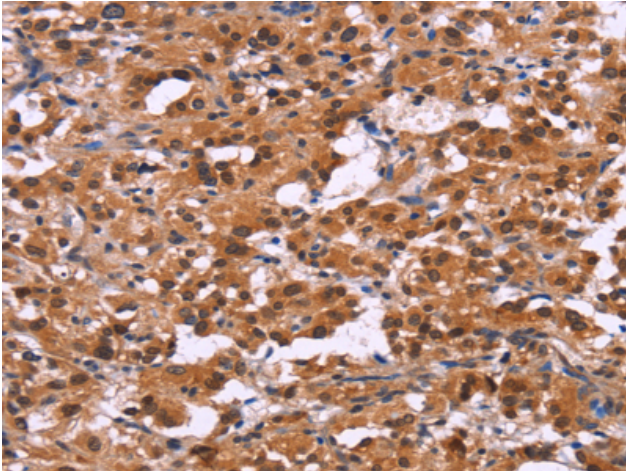
Purification: Antigen affinity purification

Species Reactivity: Human, Mouse, Rat

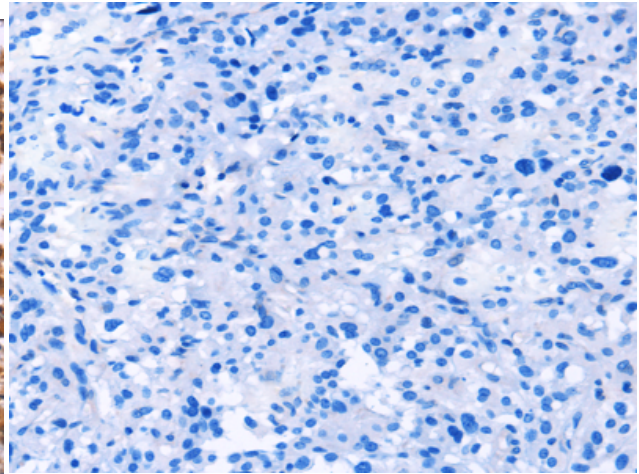
Constituents: PBS (without Mg²⁺ and Ca²⁺), pH 7.4, 150 mM NaCl, 0.05% Sodium Azide and 40% glycerol

Research Areas: Signal Transduction, Epigenetics and Nuclear Signaling

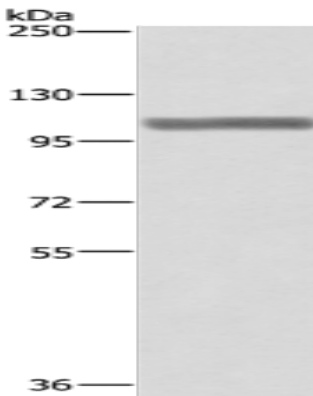
Storage & Shipping: Store at -20°C. Avoid repeated freezing and thawing



Immunohistochemistry analysis of paraffin embedded Human thyroid cancer tissue using 217151(XPO1 Antibody) at a dilution of 1/25(Cytoplasm and Nucleus).



In comparison with the IHC on the left, the same paraffin-embedded Human thyroid cancer tissue is first treated with the fusion protein and then with 217151(Anti-XPO1 Antibody) at dilution 1/25.



Gel: 6%SDS-PAGE, Lysate: 40 μ g;
Lane: NIH/3T3 cells;
Primary antibody: 217151(XPO1 Antibody) at dilution 1/275;
Secondary antibody: Goat anti rabbit IgG at 1/8000 dilution;
Exposure time: 1 minute