

## XRCC1 RABBIT MAB

**Cat.#:** N263609

**Product Name:** Anti-XRCC1 Rabbit Monoclonal Antibody

**Synonyms:** XRCC1; DNA repair protein XRCC1; X-ray repair cross-complementing protein 1

**UNIPROT ID:** P18887

**Background:** XRCC1 acts as a scaffold protein to coordinate DNA abasic site repair through interaction with several other repair proteins. At least eight XRCC1 protein partners have been identified, including the polynucleotide kinase PNK, DNA ligase III, poly (ADP-ribose) polymerase, and PCNA.

**Immunogen:** A synthetic peptide of human XRCC1

**Applications:** WB, ICC/IF

**Recommended Dilutions:** WB: 1/500-1/1000 IF: 1/50-1/200

**Host Species:** Rabbit

**Clonality:** Rabbit Monoclonal

**Clone ID:** R02-0B0

**MW:** Calculated MW: 69 kDa; Observed MW: 82 kDa

**Isotype:** IgG

**Purification:** Affinity Purified

**Species Reactivity:** Human, Rat

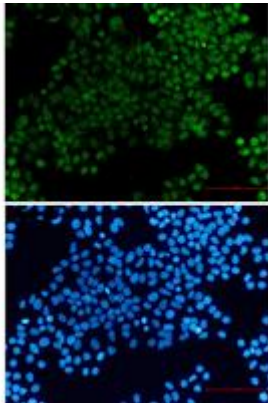
**Conjugation:** Unconjugated

**Modification:** Unmodified

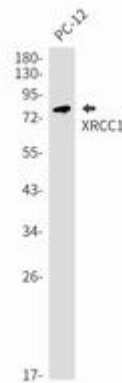
**Constituents:** PBS (without Mg<sup>2+</sup> and Ca<sup>2+</sup>), pH 7.3 containing 50% glycerol, 0.5% BSA and 0.02% sodium azide

**Research Areas:** Epigenetics and Nuclear Signaling

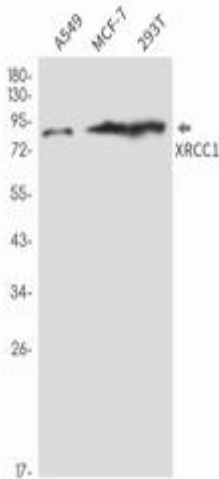
**Storage & Shipping:** Store at -20°C. Avoid repeated freezing and thawing



Immunocytochemistry analysis of XRCC1 (green) in hela using XRCC1 antibody, and DAPI (blue)



Western blot analysis of XRCC1 in PC-12 lysates using XRCC1 antibody.



Western blot analysis of XRCC1 in A549, MCF-7, 293T lysates using XRCC1 antibody.