

XRCC6 RABBIT PAB

Cat.#: S216608

Product Name: Anti-XRCC6 Rabbit Polyclonal Antibody

Synonyms: ML8, KU70, TLAA, CTC75, CTCBF, G22P1

UNIPROT ID: P12956 (Gene Accession - BC008343)

Background: The p70/p80 autoantigen is a nuclear complex consisting of two subunits with molecular masses of approximately 70 and 80 kDa. The complex functions as a single-stranded DNA-dependent ATP-dependent helicase. The complex may be involved in the repair of nonhomologous DNA ends such as that required for double-strand break repair, transposition, and V(D)J recombination. High levels of autoantibodies to p70 and p80 have been found in some patients with systemic lupus erythematosus.

Immunogen: Fusion protein of human XRCC6

Applications: ELISA, IHC

Recommended Dilutions: IHC: Oct-50; ELISA: 1000-5000

Host Species: Rabbit

Clonality: Rabbit Polyclonal

Isotype: Immunogen-specific rabbit IgG

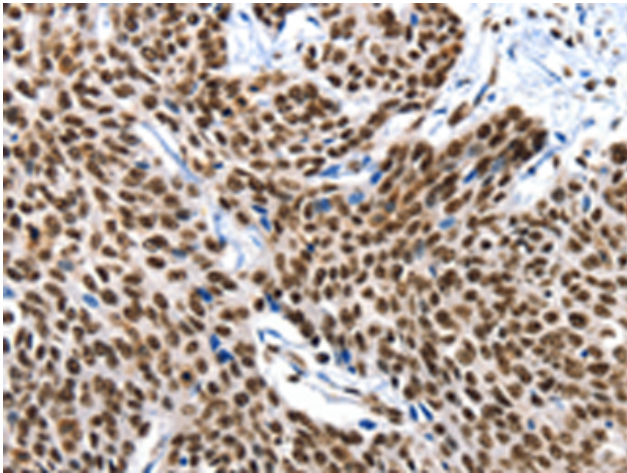
Purification: Antigen affinity purification

Species Reactivity: Human, Mouse

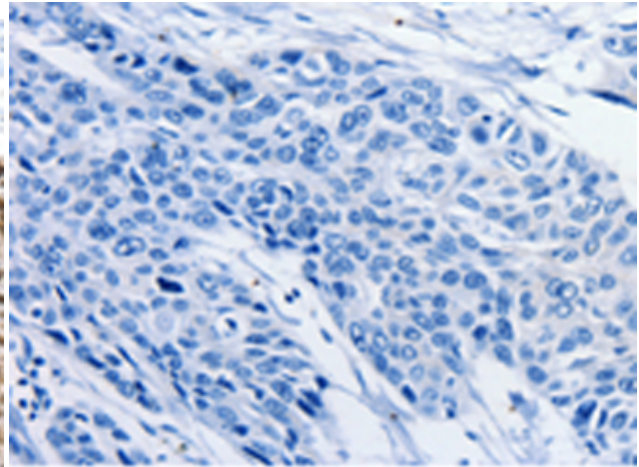
Constituents: PBS (without Mg²⁺ and Ca²⁺), pH 7.4, 150 mM NaCl, 0.05% Sodium Azide and 40% glycerol

Research Areas: Epigenetics and Nuclear Signaling, Cancer

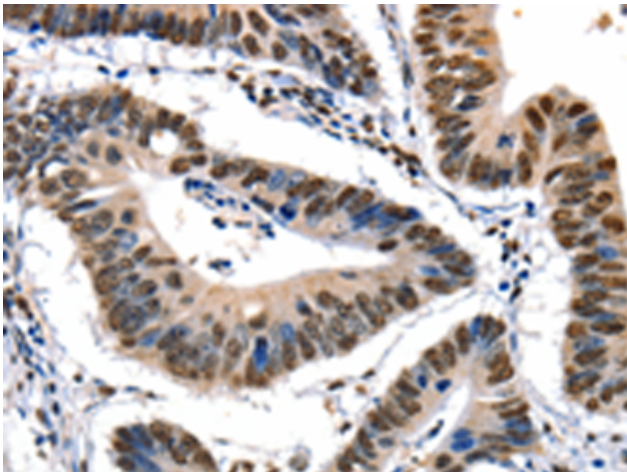
Storage & Shipping: Store at -20°C. Avoid repeated freezing and thawing



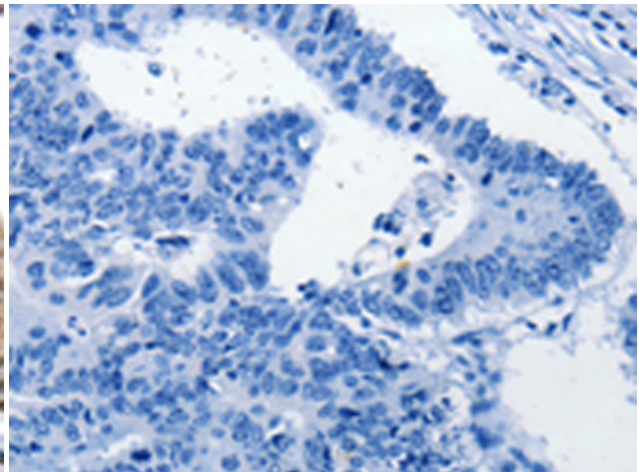
Immunohistochemistry analysis of paraffin embedded Human esophagus cancer tissue using 216608 (XRCC6 Antibody) at a dilution of 1/10 (Nucleus).



In comparison with the IHC on the left, the same paraffin-embedded Human esophagus cancer tissue is first treated with the fusion protein and then with 216608 (Anti-XRCC6 Antibody) at dilution 1/10.



The image on the left is immunohistochemistry of paraffin-embedded Human colon cancer tissue using 216608 (Anti-XRCC6 Antibody) at a dilution of 1/10.



In comparison with the IHC on the left, the same paraffin-embedded Human colon cancer tissue is first treated with fusion protein and then with D220909 (Anti-XRCC6 Antibody) at dilution 1/10.