

YB1 RABBIT MAB

Cat.#: N263094

Product Name: Anti-YB1 Rabbit Monoclonal Antibody

Synonyms: YBX1; NSEP1; YB1; Nuclease-sensitive element-binding protein 1; CCAAT-binding transcription factor I subunit A; CBF-A; DNA-binding protein B; DBPB; Enhancer factor I subunit A; EFl-A; Y-box transcription factor; Y-box-binding protein 1; YB-

UNIPROT ID: P67809

Background: This gene encodes a highly conserved cold shock domain protein that has broad nucleic acid binding properties. The encoded protein functions as both a DNA and RNA binding protein and has been implicated in numerous cellular processes including regulation of transcription and translation, pre-mRNA splicing, DNA repair and mRNA packaging. This protein is also a component of messenger ribonucleoprotein (mRNP) complexes and may have a role in microRNA processing. This protein can be secreted through non-classical pathways and functions as an extracellular mitogen. Aberrant expression of the gene is associated with cancer proliferation in numerous tissues. This gene may be a prognostic marker for poor outcome and drug resistance in certain cancers. Alternate splicing results in multiple transcript variants. Pseudogenes of this gene are found on multiple chromosomes. [provided by RefSeq, Sep 2015]

Immunogen: A synthetic peptide of human YB1

Applications: WB,IHC-F,IHC-P,ICC/IF,IP

Recommended Dilutions: WB: 1/500-1/1000 IHC: 1/50-1/100 IF: 1/50-1/200 IP: 1/20

Host Species: Rabbit

Clonality: Rabbit Monoclonal

Clone ID: R03-6G4

MW: Calculated MW: 36 kDa; Observed MW: 49 kDa

Isotype: IgG

Purification: Affinity Purified

Species Reactivity: Human,Mouse,Hamster

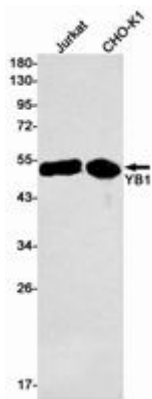
Conjugation: Unconjugated

Modification: Unmodified

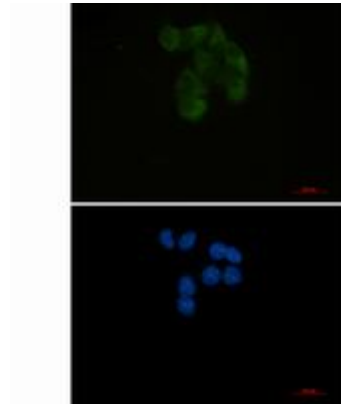
Constituents: PBS (without Mg²⁺ and Ca²⁺), pH 7.3 containing 50% glycerol, 0.5% BSA and 0.02% sodium azide

Research Areas: Tags & Cell Markers

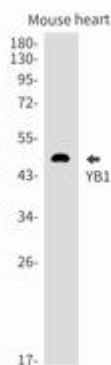
Storage & Shipping: Store at -20°C . Avoid repeated freezing and thawing



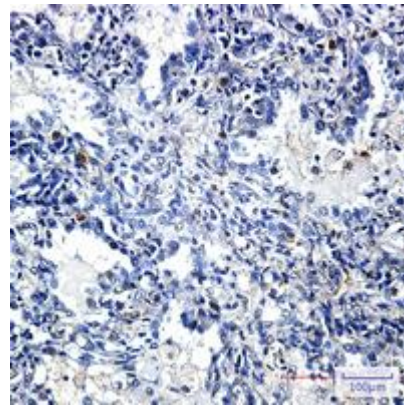
Western blot analysis of YB1 in Jurkat, Hela lysates using YB1 antibody



Immunocytochemistry analysis of YB1 (green) in Hela using YB1 antibody, and DAPI (blue).



Western blot analysis of YB1 in mouse heart lysates using YB1 antibody.



Immunohistochemistry analysis of paraffin-embedded Human lung cancer using YB1 antibody. High-pressure and temperature Sodium Citrate pH 6.0 was used for antigen retrieval.