

YES1 RABBIT MAB

Cat.#: N263096

Product Name: Anti-Yes1 Rabbit Monoclonal Antibody

Synonyms: YES1; YES; Tyrosine-protein kinase Yes; Proto-oncogene c-Yes; p61-Yes

UNIPROT ID: P07947

Background: Promotes infectivity of *Neisseria gonorrhoeae* in epithelial cells by phosphorylating MCP/CD46.

Immunogen: A synthetic peptide of human Yes1

Applications: WB,IP

Recommended Dilutions: WB: 1/500-1/1000 IP: 1/20

Host Species: Rabbit

Clonality: Rabbit Monoclonal

Clone ID: R07-8B3

MW: Calculated MW: 61 kDa; Observed MW: 61 kDa

Isotype: IgG

Purification: Affinity Purified

Species Reactivity: Human

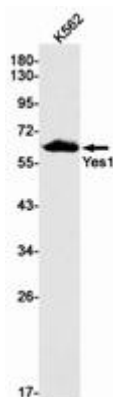
Conjugation: Unconjugated

Modification: Unmodified

Constituents: PBS (without Mg²⁺ and Ca²⁺), pH 7.3 containing 50% glycerol, 0.5% BSA and 0.02% sodium azide

Research Areas: Signal Transduction

Storage & Shipping: Store at -20°C. Avoid repeated freezing and thawing



Western blot analysis of Yes1 in K562 lysates using Yes1 antibody.



Product Description

Pioneering GTPase and Oncogene Product Development since 2010
