

## YPEL3 RABBIT PAB

**Cat.#:** S218271

**Product Name:** Anti-YPEL3 Rabbit Polyclonal Antibody

**Synonyms:**

**UNIPROT ID:** P61236 (Gene Accession - BC005009 )

**Background:** YPEL3 (yippee-like 3) belongs to a family of five yippee-like proteins, all of which localize to the centrosome or mitotic spindle and are widely expressed in both adult and fetal tissue. This localization plus the fact that the family of human YPEL proteins share a high degree of sequence homology across species suggests that these proteins may have a conserved function involved in cell division. YPEL3 is a p53-regulated gene whose expression is induced by DNA damage and in turn induces cellular senescence. It appears to function as a tumor suppressor as it is downregulated in colon and breast tumors. Involved in proliferation and apoptosis in myeloid precursor cells.

**Immunogen:** Full length fusion protein

**Applications:** ELISA, IHC

**Recommended Dilutions:** IHC: 20-100; ELISA: 5000-10000

**Host Species:** Rabbit

**Clonality:** Rabbit Polyclonal

**Isotype:** Immunogen-specific rabbit IgG

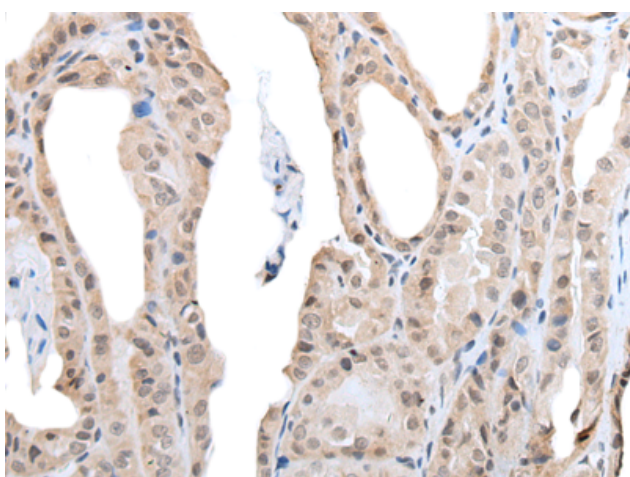
**Purification:** Antigen affinity purification

**Species Reactivity:** Human, Mouse

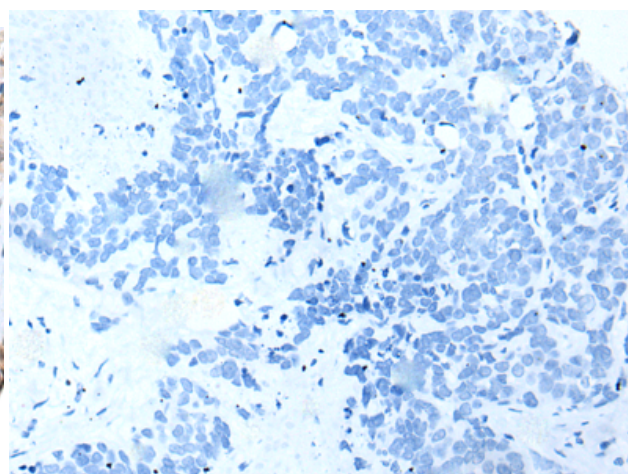
**Constituents:** PBS (without Mg<sup>2+</sup> and Ca<sup>2+</sup>), pH 7.4, 150 mM NaCl, 0.05% Sodium Azide and 40% glycerol

**Research Areas:** Epigenetics and Nuclear Signaling

**Storage & Shipping:** Store at -20°C. Avoid repeated freezing and thawing



Immunohistochemistry analysis of paraffin embedded Human thyroid cancer tissue using 218271(YPEL3 Antibody) at a dilution of 1/30(Nucleus ).



In comparison with the IHC on the left, the same paraffin-embedded Human thyroid cancer tissue is first treated with the fusion protein and then with 218271(Anti-YPEL3 Antibody) at dilution 1/30.



# Product Description

Pioneering GTPase and Oncogene Product Development since 2010

---