

YTHDC2 RABBIT MAB

Cat.#: N263611

Product Name: Anti-YTHDC2 Rabbit Monoclonal Antibody

Synonyms: CAHL; hYTHDC2

UNIPROT ID: B2RR83

Background: 3'-5' RNA helicase that plays a key role in the male and female germline by promoting transition from mitotic to meiotic divisions in stem cells.

Immunogen: Recombinant protein of mouse YTHDC2

Applications: WB,IP

Recommended Dilutions: WB: 1/500-1/1000 IP: 1/20

Host Species: Rabbit

Clonality: Rabbit Monoclonal

Clone ID: R04-7F8

MW: Calculated MW: 161 kDa; Observed MW: 161 kDa

Isotype: IgG

Purification: Affinity Purified

Species Reactivity: Human

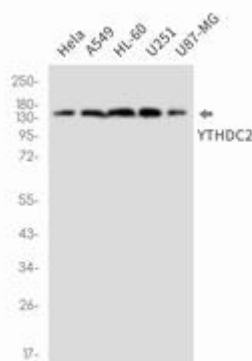
Conjugation: Unconjugated

Modification: Unmodified

Constituents: PBS (without Mg²⁺ and Ca²⁺), pH 7.3 containing 50% glycerol, 0.5% BSA and 0.02% sodium azide

Research Areas: Epigenetics and Nuclear Signaling

Storage & Shipping: Store at -20°C. Avoid repeated freezing and thawing



Western blot analysis of YTHDC2 in HeLa, A549, HL-60, U251, U87-MG lysates using YTHDC2 antibody.



Product Description

Pioneering GTPase and Oncogene Product Development since 2010
