

YTHDF3 RABBIT PAB

Cat.#: S219603

Product Name: Anti-YTHDF3 Rabbit Polyclonal Antibody

Synonyms: DF3

UNIPROT ID: Q7Z739 (Gene Accession - BC052970)

Background: This gene encodes a member of the YTH (YT521-B homology) domain protein family. The YTH domain is common in eukaryotes, is often found in the middle of the protein sequence, and may function in binding to RNA. Alternative splicing results in multiple transcript variants.

Immunogen: Fusion protein of human YTHDF3

Applications: ELISA, IHC

Recommended Dilutions: IHC: 50-200; ELISA: 5000-10000

Host Species: Rabbit

Clonality: Rabbit Polyclonal

Isotype: Immunogen-specific rabbit IgG

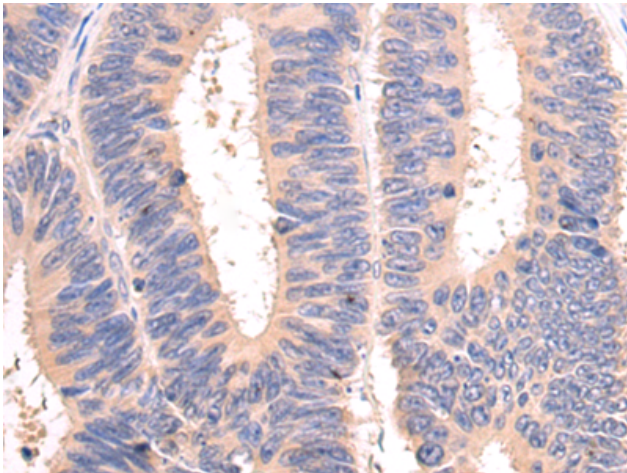
Purification: Antigen affinity purification

Species Reactivity: Human, Mouse

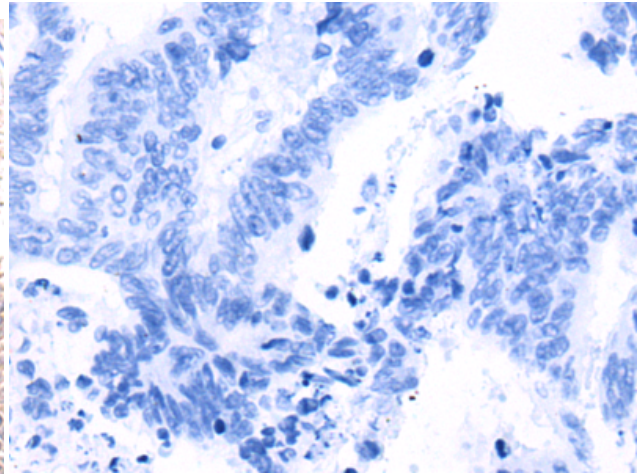
Constituents: PBS (without Mg²⁺ and Ca²⁺), pH 7.4, 150 mM NaCl, 0.05% Sodium Azide and 40% glycerol

Research Areas: Cell Biology

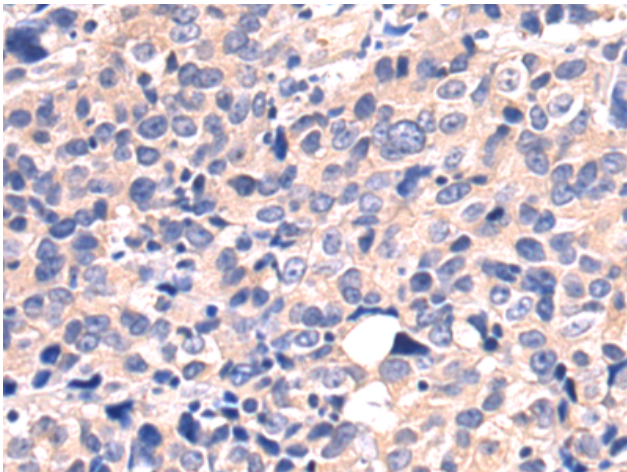
Storage & Shipping: Store at -20°C. Avoid repeated freezing and thawing



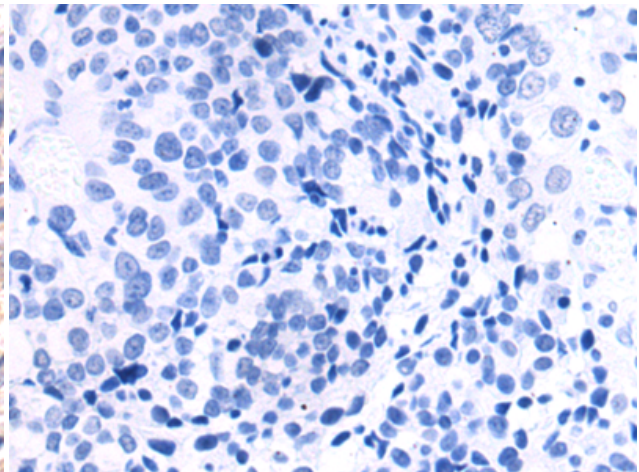
Immunohistochemistry analysis of paraffin embedded Human colorectal cancer tissue using 219603(YTHDF3 Antibody) at a dilution of 1/55(Cytoplasm).



In comparison with the IHC on the left, the same paraffin-embedded Human colorectal cancer tissue is first treated with the fusion protein and then with 219603(Anti-YTHDF3 Antibody) at dilution 1/55.



The image on the left is immunohistochemistry of paraffin-embedded Human bladder cancer tissue using 219603(Anti-YTHDF3 Antibody) at a dilution of 1/55.



In comparison with the IHC on the left, the same paraffin-embedded Human bladder cancer tissue is first treated with fusion protein and then with D227896(Anti-YTHDF3 Antibody) at dilution 1/55.