

## YWHAB RABBIT PAB

**Cat.#:** S219608

**Product Name:** Anti-YWHAB Rabbit Polyclonal Antibody

**Synonyms:** HSI, GW128, YWHAA, KCIP-1

**UNIPROT ID:** P31946 (Gene Accession - NP\_003395 )

**Background:** This gene encodes a protein belonging to the 14-3-3 family of proteins, members of which mediate signal transduction by binding to phosphoserine-containing proteins. This highly conserved protein family is found in both plants and mammals. The encoded protein has been shown to interact with RAF1 and CDC25 phosphatases, suggesting that it may play a role in linking mitogenic signaling and the cell cycle machinery. Two transcript variants, which encode the same protein, have been identified for this gene.

**Immunogen:** Synthetic peptide of human YWHAB

**Applications:** ELISA, WB, IHC

**Recommended Dilutions:** IHC: 25-100;WB: 1000-5000;ELISA: 2000-10000

**Host Species:** Rabbit

**Clonality:** Rabbit Polyclonal

**Isotype:** Immunogen-specific rabbit IgG

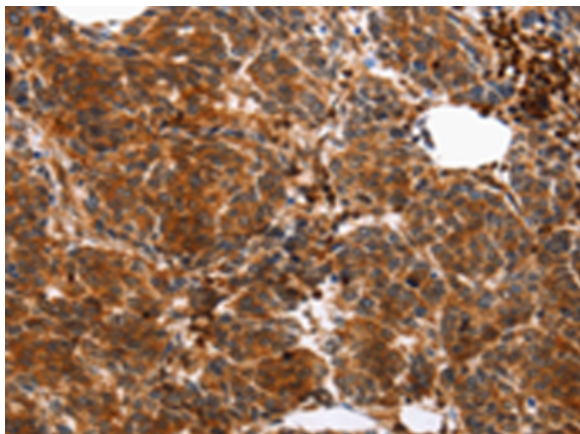
**Purification:** Antigen affinity purification

**Species Reactivity:** Human, Mouse, Rat

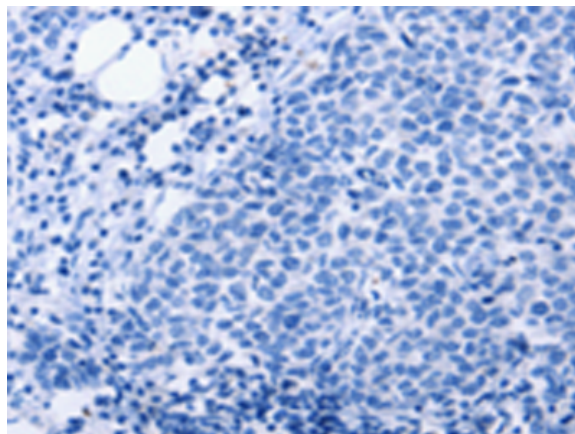
**Constituents:** PBS (without Mg<sup>2+</sup> and Ca<sup>2+</sup>), pH 7.4, 150 mM NaCl, 0.05% Sodium Azide and 40% glycerol

**Research Areas:** Signal Transduction, Neuroscience

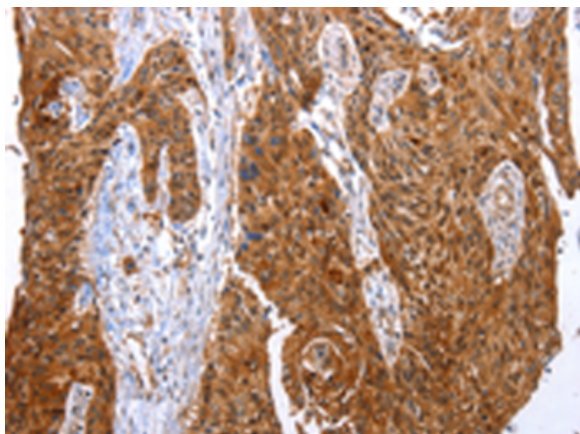
**Storage & Shipping:** Store at -20°C. Avoid repeated freezing and thawing



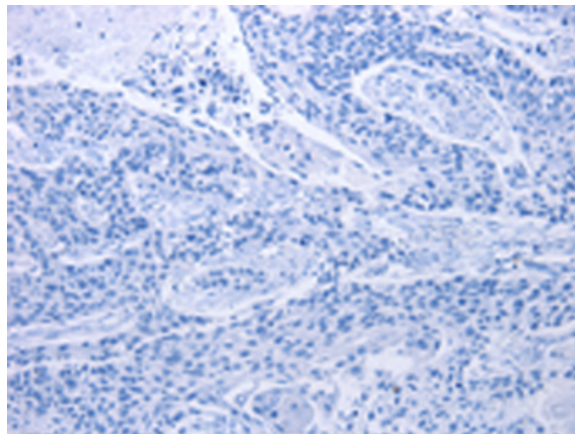
Immunohistochemistry analysis of paraffin embedded Human breast cancer tissue using 219608(YWHAB Antibody) at a dilution of 1/10(Cytoplasm ).



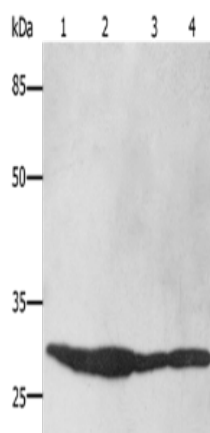
In comparison with the IHC on the left, the same paraffin-embedded Human breast cancer tissue is first treated with the synthetic peptide and then with 219608(Anti-YWHAB Antibody) at dilution 1/10.



The image on the left is immunohistochemistry of paraffin-embedded Human esophagus cancer tissue using 219608(Anti-YWHAB Antibody) at a dilution of 1/10.



In comparison with the IHC on the left, the same paraffin-embedded Human esophagus cancer tissue is first treated with synthetic peptide and then with D260011(Anti-YWHAB Antibody) at dilution 1/10.



Gel: 10%SDS-PAGE, Lysate: 40  $\mu$ g;  
 Lane 1-4: HT29 cells, 293T cells, Hela cells, Mouse brain tissue;  
 Primary antibody: 219608(YWHAB Antibody) at dilution 1/250;  
 Secondary antibody: Goat anti rabbit IgG at 1/8000 dilution;  
 Exposure time: 1 second



# Product Description

Pioneering GTPase and Oncogene Product Development since 2010

---