

## YWHAE RABBIT PAB

**Cat.#:** S216233

**Product Name:** Anti-YWHAE Rabbit Polyclonal Antibody

**Synonyms:** MDS; HEL2; MDCR; KCIP-1; 14-3-3E

**UNIPROT ID:** P62258 (Gene Accession - BC000179 )

**Background:** This gene product belongs to the 14-3-3 family of proteins which mediate signal transduction by binding to phosphoserine-containing proteins. This highly conserved protein family is found in both plants and mammals, and this protein is 100% identical to the mouse ortholog. It interacts with CDC25 phosphatases, RAF1 and IRS1 proteins, suggesting its role in diverse biochemical activities related to signal transduction, such as cell division and regulation of insulin sensitivity. It has also been implicated in the pathogenesis of small cell lung cancer. Two transcript variants, one protein-coding and the other non-protein-coding, have been found for this gene.

**Immunogen:** Fusion protein of human YWHAE

**Applications:** ELISA, WB, IHC

**Recommended Dilutions:** IHC: 50-200;WB: 1000-5000;ELISA: 5000-10000

**Host Species:** Rabbit

**Clonality:** Rabbit Polyclonal

**Isotype:** Immunogen-specific rabbit IgG

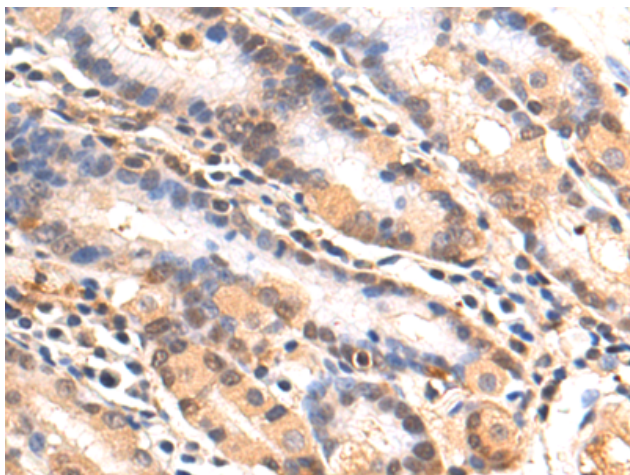
**Purification:** Antigen affinity purification

**Species Reactivity:** Human, Mouse, Rat

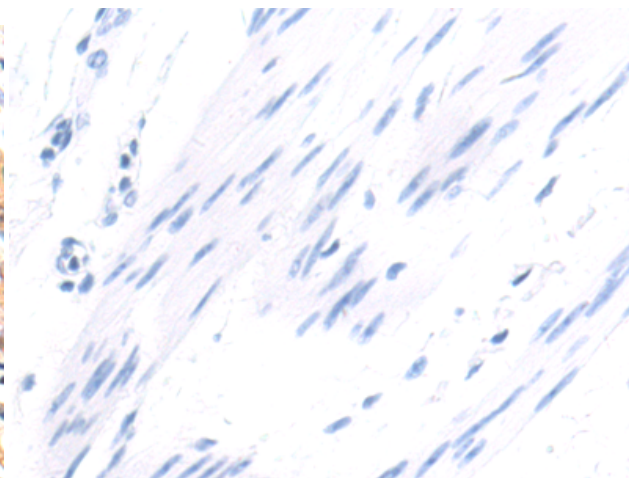
**Constituents:** PBS (without Mg<sup>2+</sup> and Ca<sup>2+</sup>), pH 7.4, 150 mM NaCl, 0.05% Sodium Azide and 40% glycerol

**Research Areas:** Signal Transduction, Neuroscience

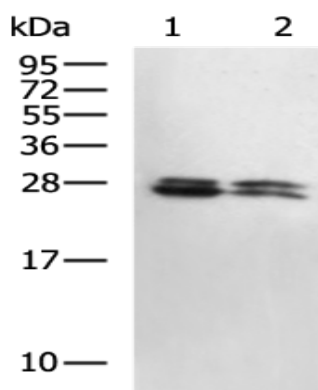
**Storage & Shipping:** Store at -20°C. Avoid repeated freezing and thawing



Immunohistochemistry analysis of paraffin embedded Human gastric cancer tissue using 216233(YWHAE Antibody) at a dilution of 1/80(Cytoplasm and Nucleus).



In comparison with the IHC on the left, the same paraffin-embedded Human gastric cancer tissue is first treated with the fusion protein and then with 216233(Anti-YWHAE Antibody) at dilution 1/80.



Gel: 12%SDS-PAGE, Lysate: 40 µg;

Lane 1-2: Mouse brain tissue, Mouse fetal brain tissue lysates;

Primary antibody: 216233(YWHAE Antibody) at dilution 1/1000;

Secondary antibody: HRP-conjugated Goat anti rabbit IgG at 1/5000 dilution;

Exposure time: 15 seconds