

YWHAQ RABBIT PAB

Cat.#: S219937

Product Name: Anti-YWHAQ Rabbit Polyclonal Antibody

Synonyms: IC5, HSI, I4-3-3

UNIPROT ID: P27348 (Gene Accession - NP_006817)

Background: This gene product belongs to the I4-3-3 family of proteins which mediate signal transduction by binding to phosphoserine-containing proteins. This highly conserved protein family is found in both plants and mammals, and this protein is 99% identical to the mouse and rat orthologs. This gene is upregulated in patients with amyotrophic lateral sclerosis. It contains in its 5' UTR a 6 bp tandem repeat sequence which is polymorphic, however, there is no correlation between the repeat number and the disease.

Immunogen: Synthetic peptide of human YWHAQ

Applications: ELISA, WB, IHC

Recommended Dilutions: IHC: 25-100;WB: 500-2000;ELISA: 1000-5000

Host Species: Rabbit

Clonality: Rabbit Polyclonal

Isotype: Immunogen-specific rabbit IgG

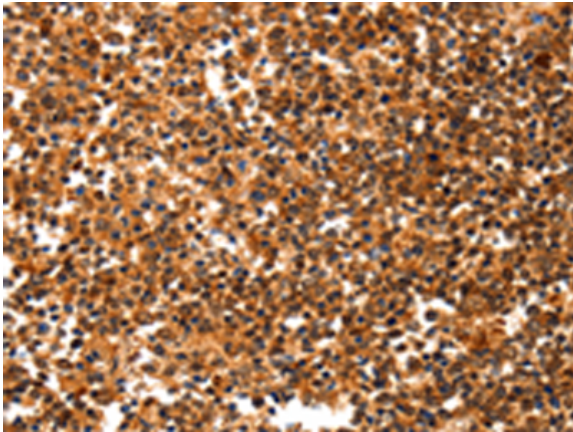
Purification: Antigen affinity purification

Species Reactivity: Human, Mouse, Rat

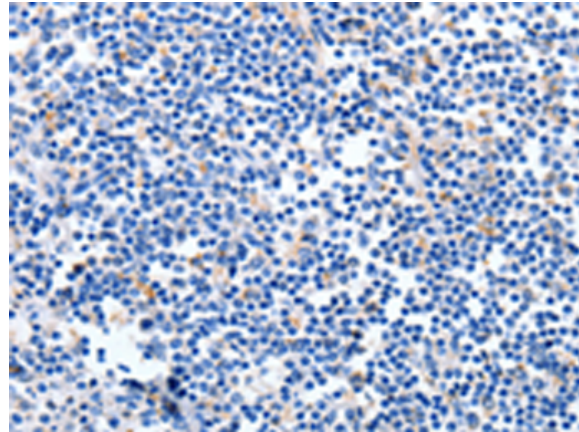
Constituents: PBS (without Mg²⁺ and Ca²⁺), pH 7.4, 150 mM NaCl, 0.05% Sodium Azide and 40% glycerol

Research Areas: Signal Transduction

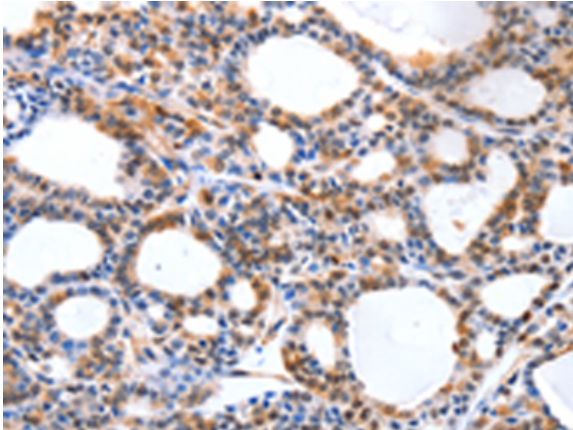
Storage & Shipping: Store at -20°C. Avoid repeated freezing and thawing



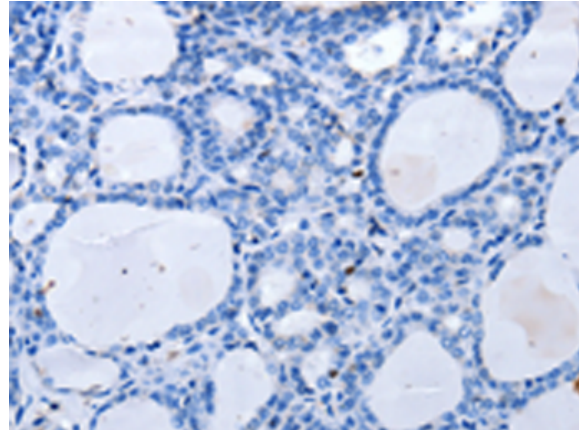
Immunohistochemistry analysis of paraffin embedded Human tonsil tissue using 219937(YWHAQ Antibody) at a dilution of 1/20(Cytoplasm, Nucleus).



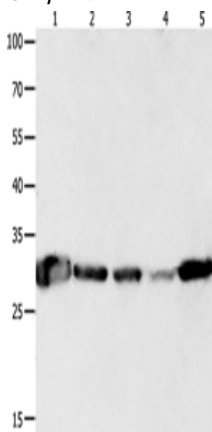
In comparison with the IHC on the left, the same paraffin-embedded Human tonsil tissue is first treated with the synthetic peptide and then with 219937(Anti-YWHAQ Antibody) at dilution 1/20.



The image on the left is immunohistochemistry of paraffin-embedded Human thyroid cancer tissue using 219937(Anti-YWHAQ Antibody) at a dilution of 1/20.



In comparison with the IHC on the left, the same paraffin-embedded Human thyroid cancer tissue is first treated with synthetic peptide and then with D260654(Anti-YWHAQ Antibody) at dilution 1/20.



Gel: 10+12%SDS-PAGE, Lysate: 40 µg;
 Lane 1-5: Mouse brain tissue, A549 cells, human lymphoma tissue, NIH/3T3 cells, human colon cancer tissue;
 Primary antibody: 219937(YWHAQ Antibody) at dilution 1/300;
 Secondary antibody: Goat anti rabbit IgG at 1/8000 dilution;
 Exposure time: 5 seconds



Product Description

Pioneering GTPase and Oncogene Product Development since 2010
