

## ZADH2 RABBIT PAB

**Cat.#:** S213308

**Product Name:** Anti-ZADH2 Rabbit Polyclonal Antibody

**Synonyms:**

**UNIPROT ID:** Q8N4Q0 (Gene Accession - NP\_787103 )

**Background:** ZADH2 (zinc binding alcohol dehydrogenase domain containing 2) is a 377 amino acid protein that belongs to the zinc-containing alcohol dehydrogenase family and is encoded by a gene which maps to human chromosome 18. Chromosome 18 houses over 300 protein-coding genes and contains nearly 76 million bases. There are a variety of diseases associated with defects in chromosome 18-localized genes, some of which include Trisomy 18 (also known as Edwards syndrome), Niemann-Pick disease, hereditary hemorrhagic telangiectasia, erythropoietic protoporphyria and follicular lymphomas.

**Immunogen:** Synthetic peptide of human ZADH2

**Applications:** ELISA, WB, IHC

**Recommended Dilutions:** IHC: 100-300;WB: 500-2000;ELISA: 2000-5000

**Host Species:** Rabbit

**Clonality:** Rabbit Polyclonal

**Isotype:** Immunogen-specific rabbit IgG

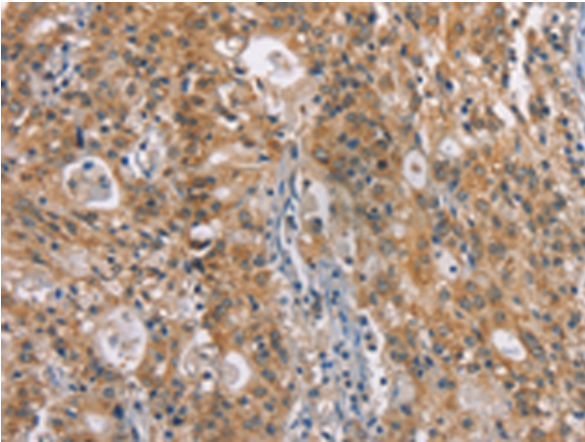
**Purification:** Antigen affinity purification

**Species Reactivity:** Human, Mouse

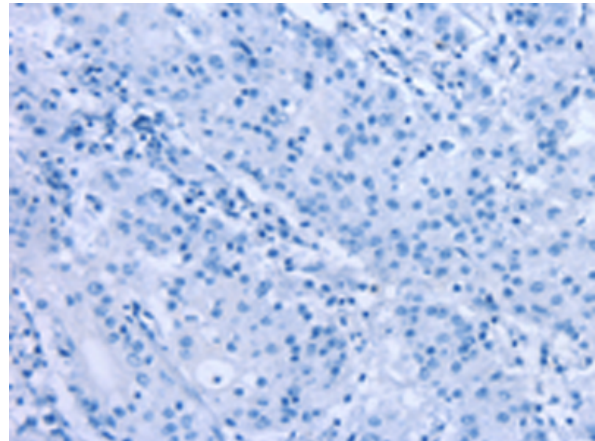
**Constituents:** PBS (without Mg<sup>2+</sup> and Ca<sup>2+</sup>), pH 7.4, 150 mM NaCl, 0.05% Sodium Azide and 40% glycerol

**Research Areas:** Cell Biology

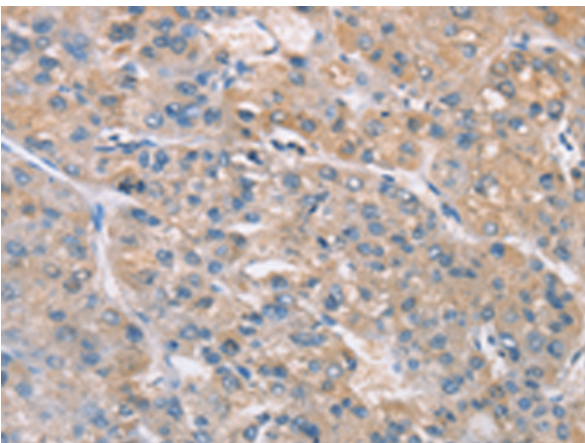
**Storage & Shipping:** Store at -20°C. Avoid repeated freezing and thawing



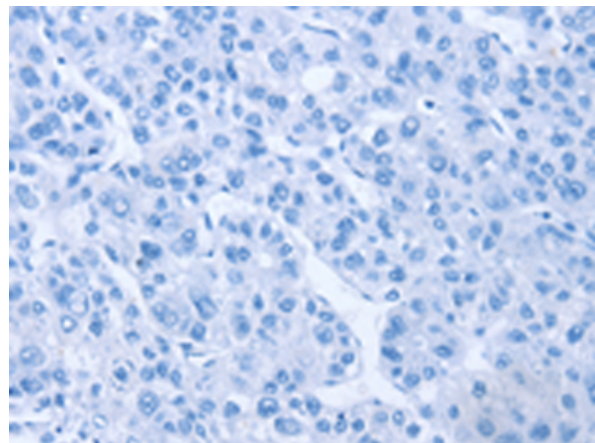
Immunohistochemistry analysis of paraffin embedded Human gastric cancer tissue using 213308(ZADH2 Antibody) at a dilution of 1/100(Cytoplasm ).



In comparison with the IHC on the left, the same paraffin-embedded Human gastric cancer tissue is first treated with the synthetic peptide and then with 213308(Anti-ZADH2 Antibody) at dilution 1/100.



The image on the left is immunohistochemistry of paraffin-embedded Human liver cancer tissue using 213308(Anti-ZADH2 Antibody) at a dilution of 1/100.



In comparison with the IHC on the left, the same paraffin-embedded Human liver cancer tissue is first treated with synthetic peptide and then with D156004(Anti-ZADH2 Antibody) at dilution 1/100.



Gel: 10%SDS-PAGE, Lysate: 40 µg;  
Lane: Mouse brain tissue;  
Primary antibody: 213308(ZADH2 Antibody) at dilution 1/1000;  
Secondary antibody: Goat anti rabbit IgG at 1/8000 dilution;  
Exposure time: 40 seconds



# Product Description

Pioneering GTPase and Oncogene Product Development since 2010

---